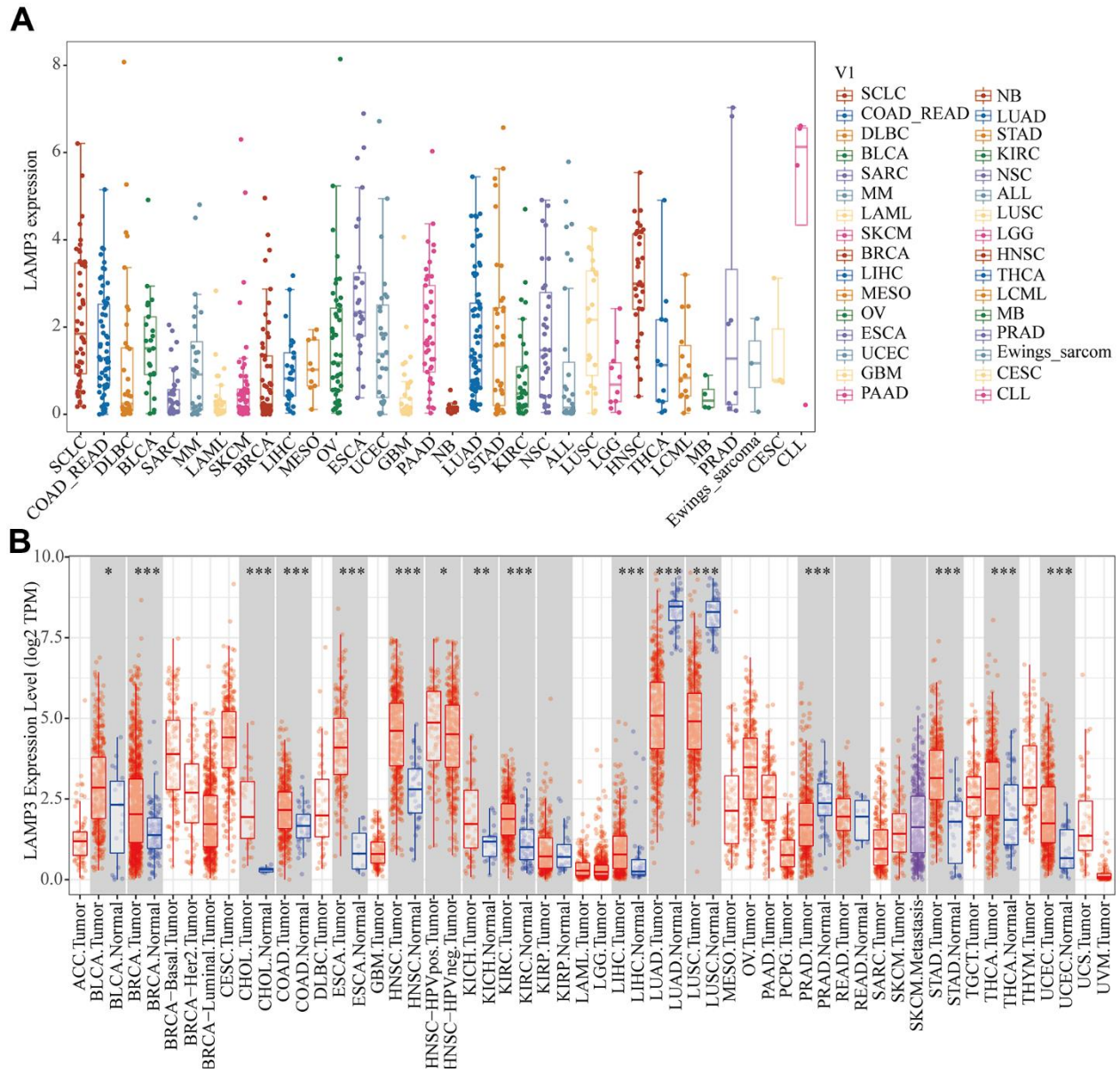
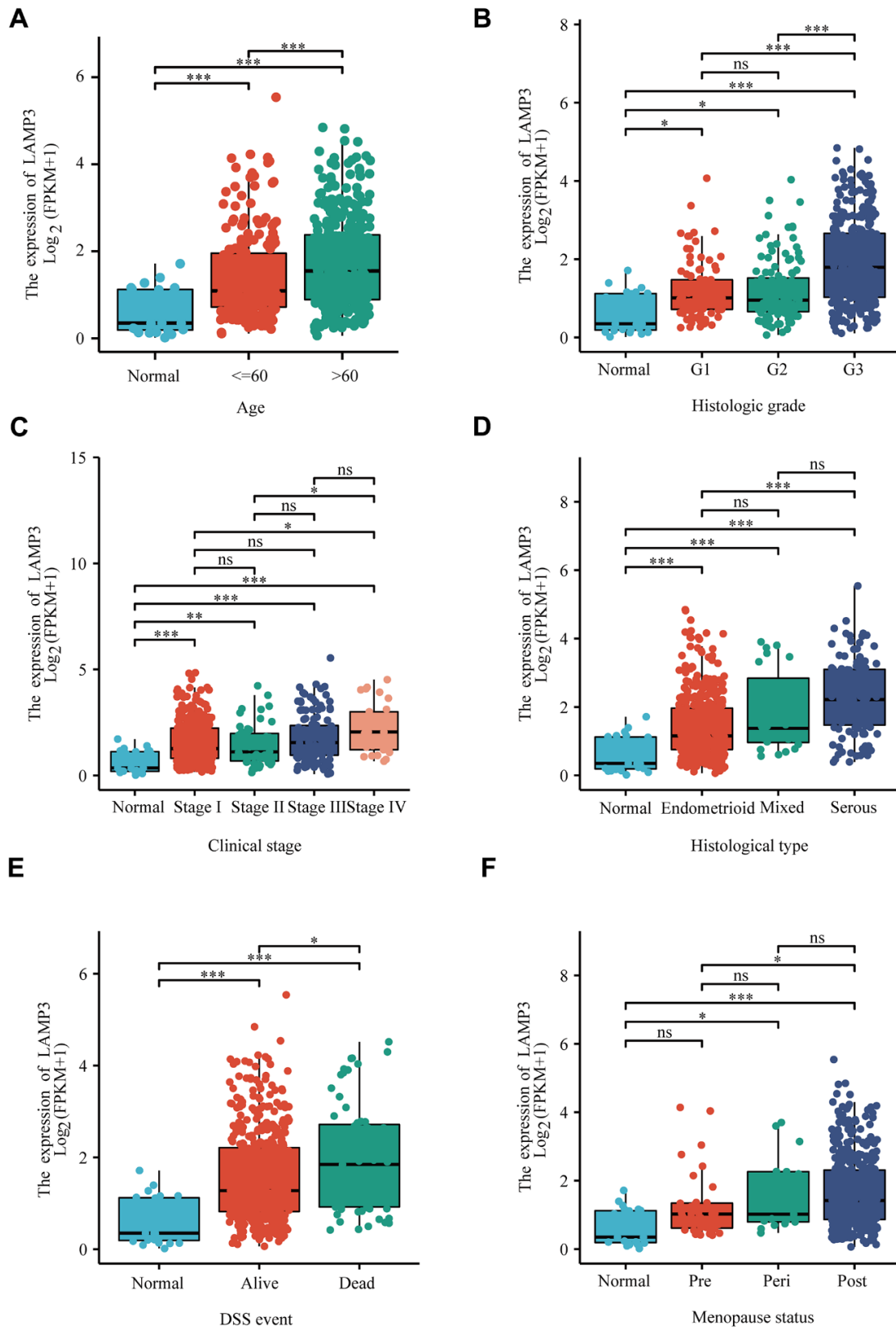


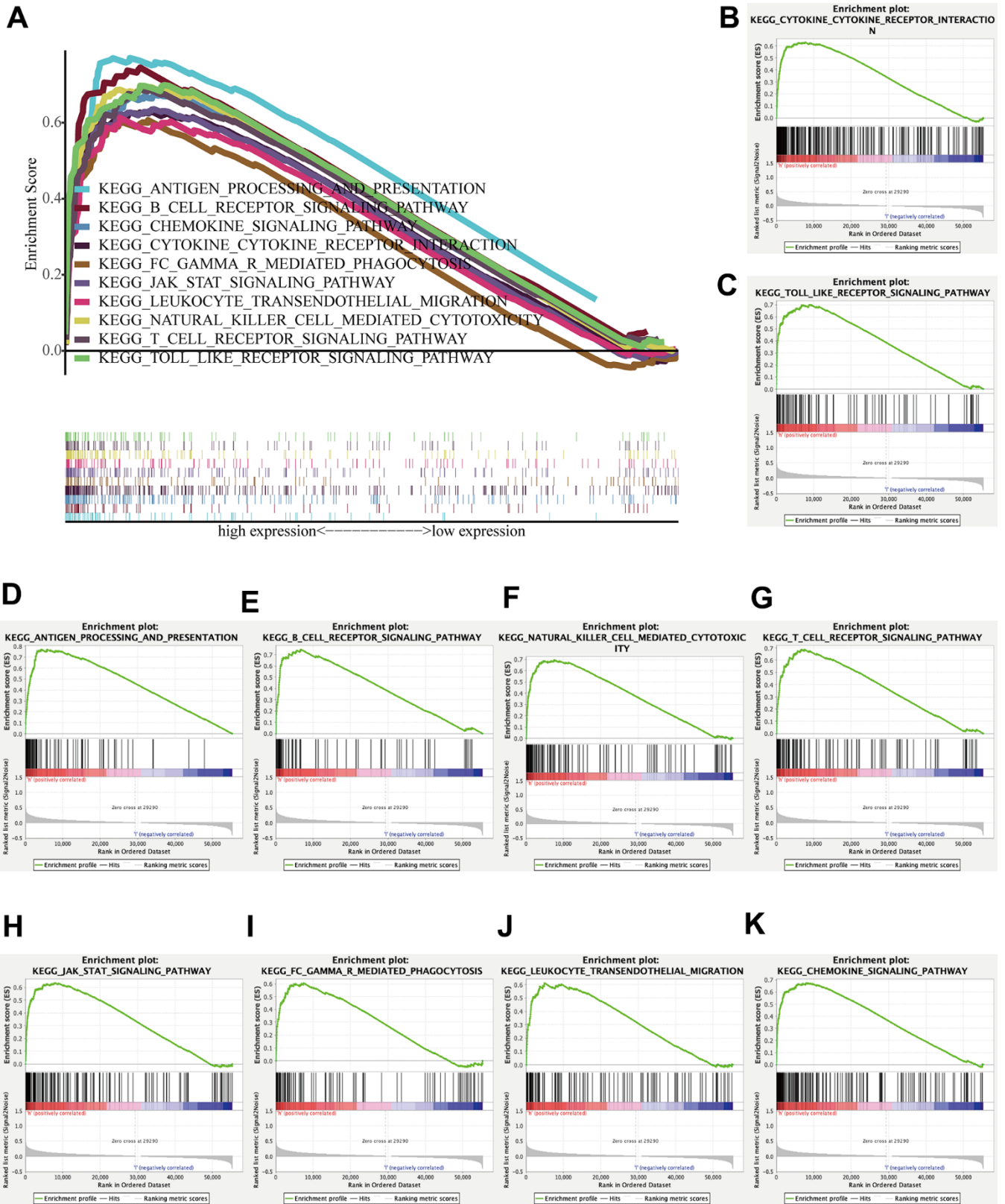
SUPPLEMENTARY FIGURES



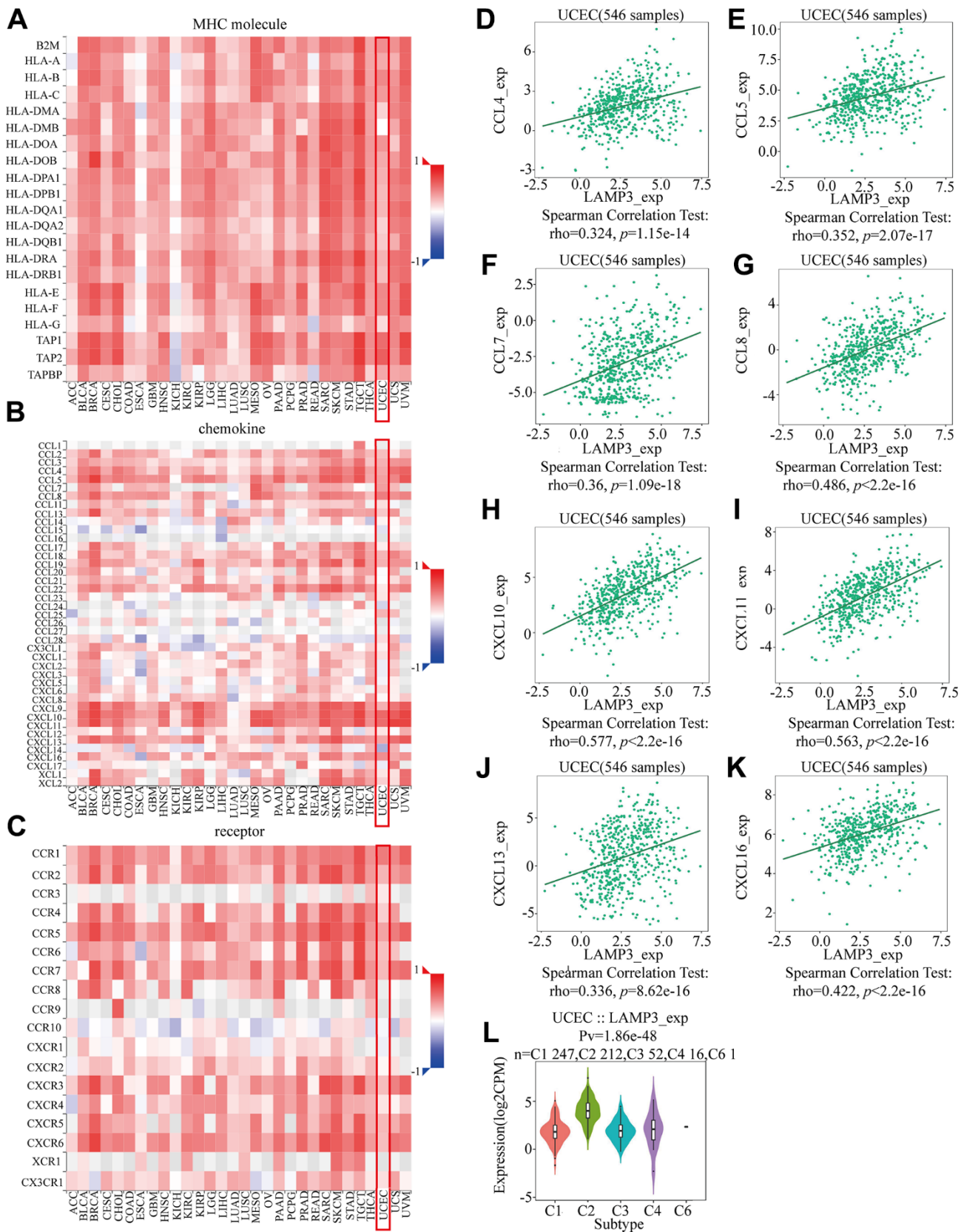
Supplementary Figure 1. (A) Expression distribution of LAMP3 in a variety of tumors in the CCLE database. (B) Expression of LAMP3 in normal and tumor tissues obtained from TCGA pan-cancer data from TIMER website.



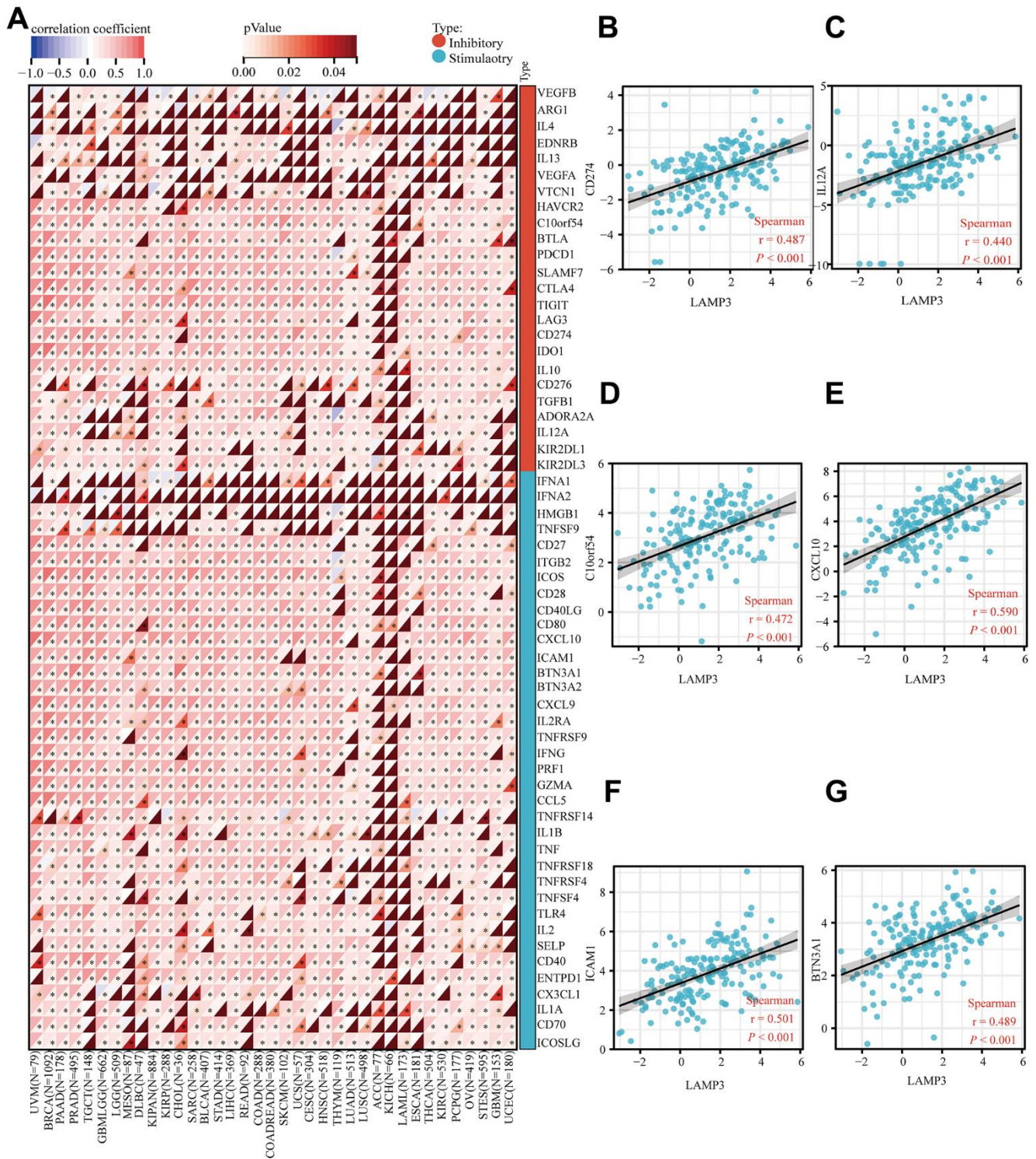
Supplementary Figure 2. LAMP3 expression is closely associated with various clinicopathological features. Box plots demonstrate the difference in LAMP3 expression among 6 subgroups according to (A) Age, (B) Histological grade, (C) Clinical stage, (D) Histological type, (E) DSS event, (F) Menopause status.



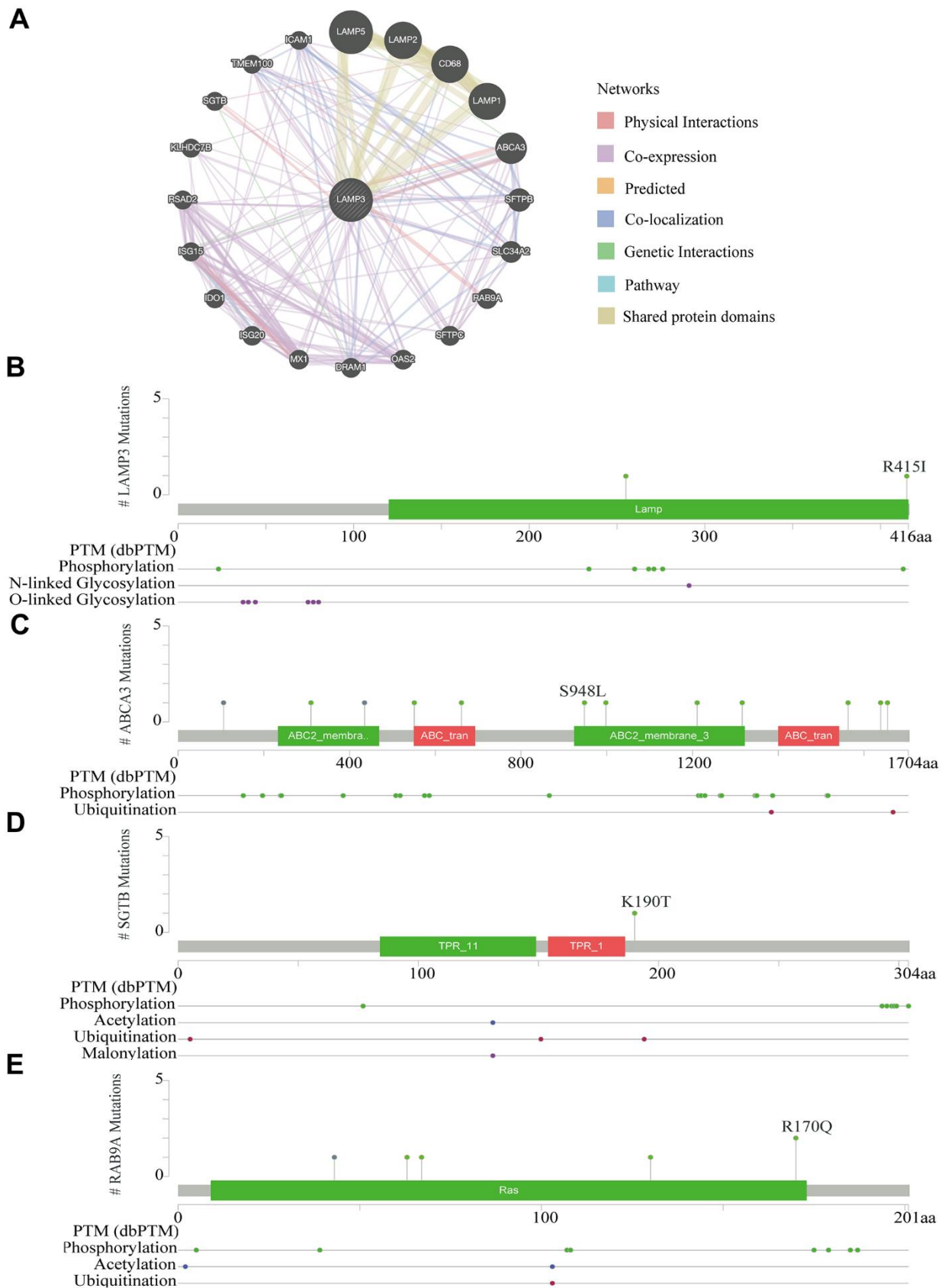
Supplementary Figure 3. (A–K) GSEA profiling reveals the enrichment pathways of LAMP3 high expression group.



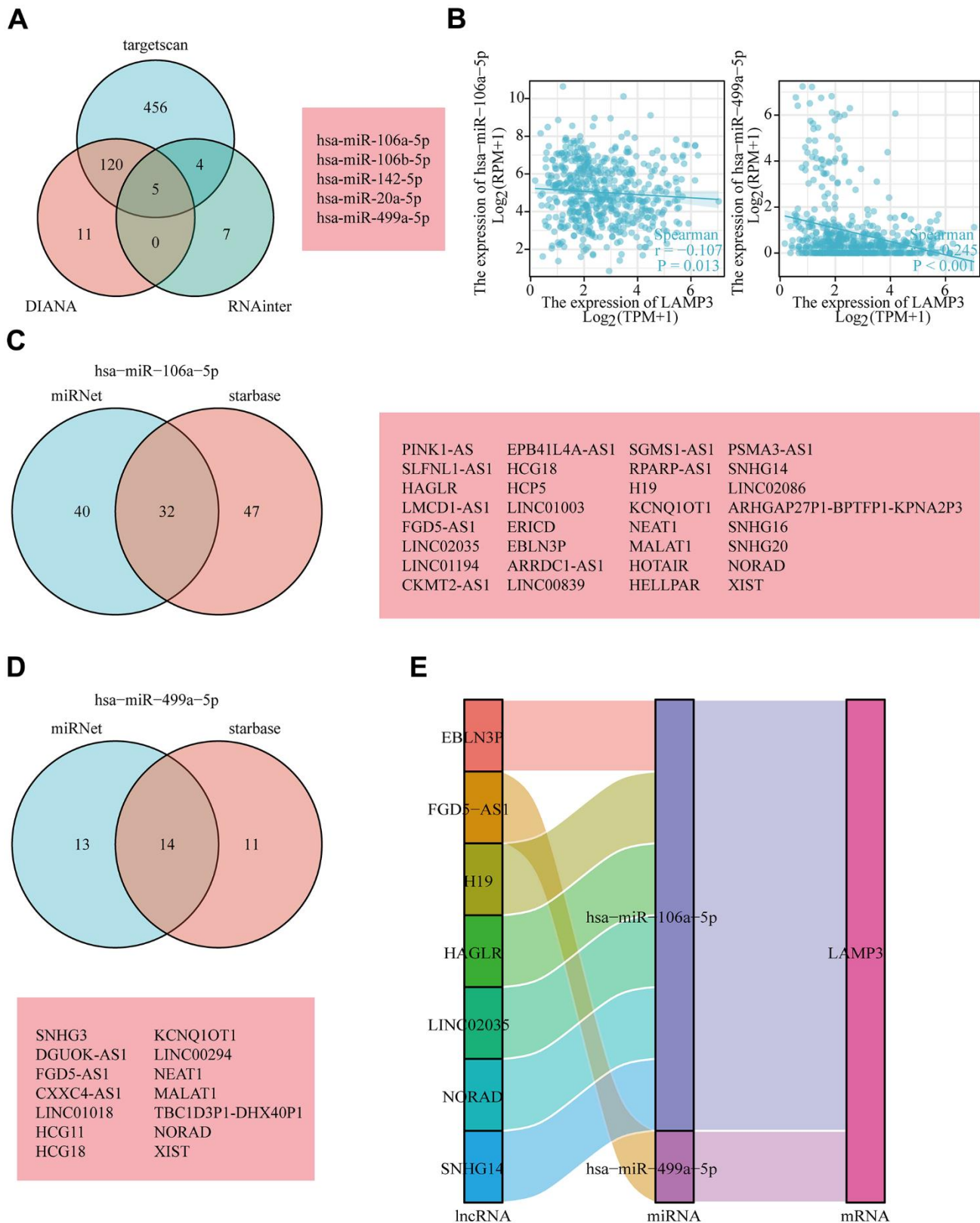
Supplementary Figure 4. Connection of LAMP3 with various cytokines in UCEC. Correlation of LAMP3 expression in pan-cancer with (A) MHC molecule, (B) chemokine, and (C) receptor. (D–L) Scatter plots of relationship between LAMP3 expression and CCL4, CCL5, CCL7, CCL8, CXCL10, CXCL11, CXCL13, CXCL16. (E) Expression level of LAMP3 among the 5 immune subgroups.



Supplementary Figure 5. Association of LAMP3 with various immune checkpoints in UCEC. (A) Heatmap illustrates the association of LAMP3 with immunostimulants and immunosuppressants in pan-cancer. (B–G) Scatter plots of the correlation between LAMP3 expression and CD274, IL12A, C10orf54, CXCL10, ICAM1, BTN3A1.



Supplementary Figure 6. Protein network secondary structure of LAMP3. (A) Interaction network of LAMP3 (different colored lines represent different roles). (B–E) Secondary structures of LAMP3, ABCA3, SGTB and RAB9A constructed by cBioPortal online website.



Supplementary Figure 7. Prediction and construction of lncRNA-miRNA-mRNA network of LAMP3. (A) Predicted miRNAs targeting LAMP3 in TargetScan, DIANA and RNAinter databases. (B) Correlation of has-miR-106a-5p and has-miR-499a-5p with LAMP3 expression. lncRNAs targeting (C) has-miR-106a-5p and (D) has-miR-499a-5p in miRNet and starBase databases. (E) Two pairs of ceRNA networks involving LAMP3.