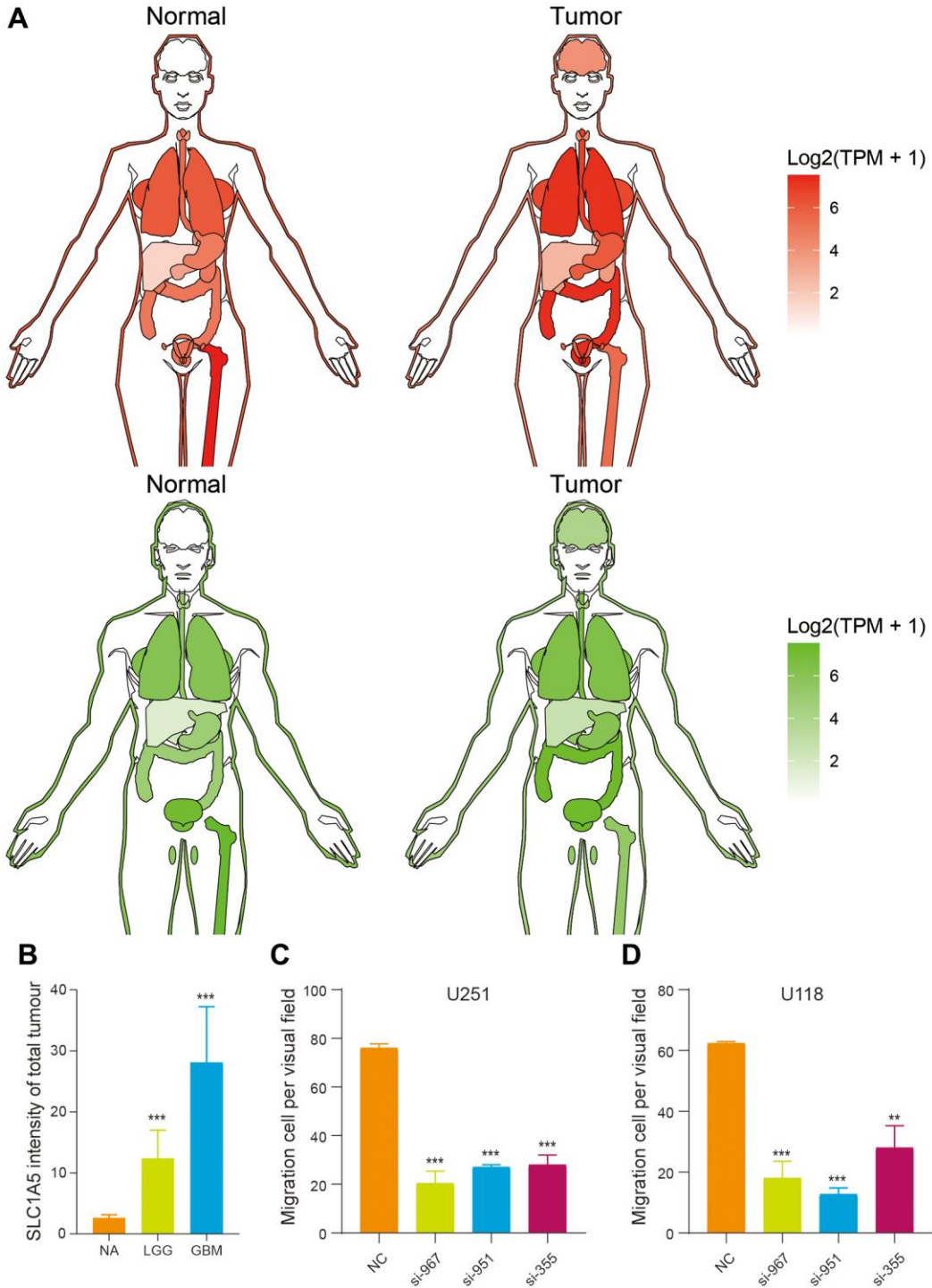
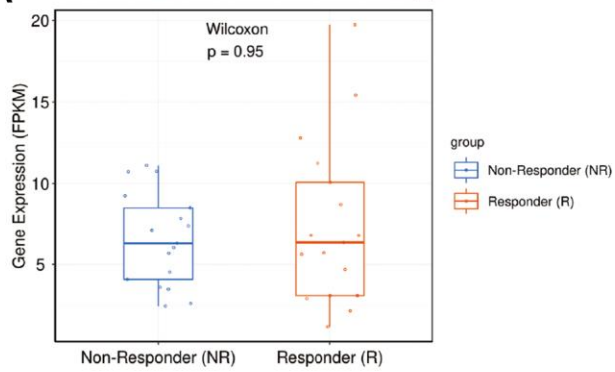
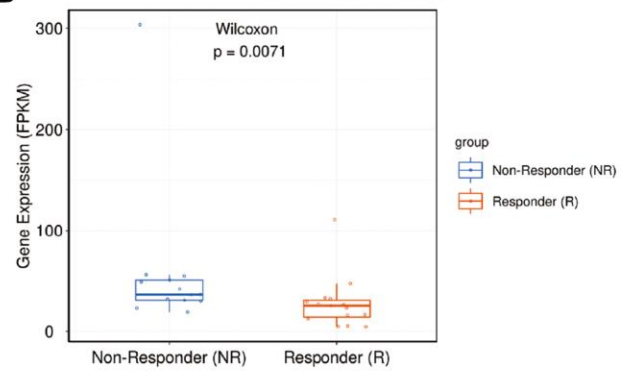
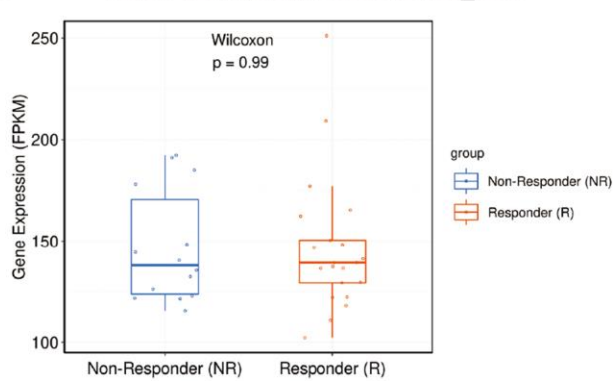
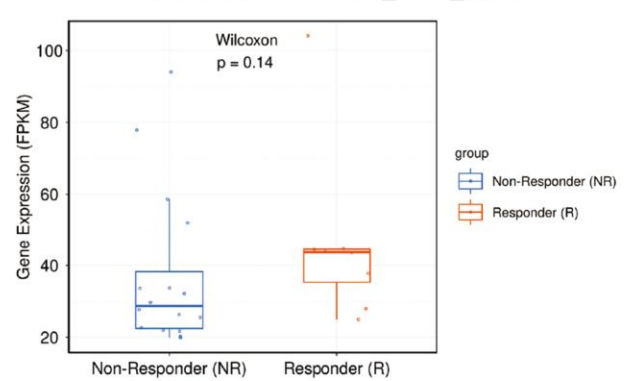
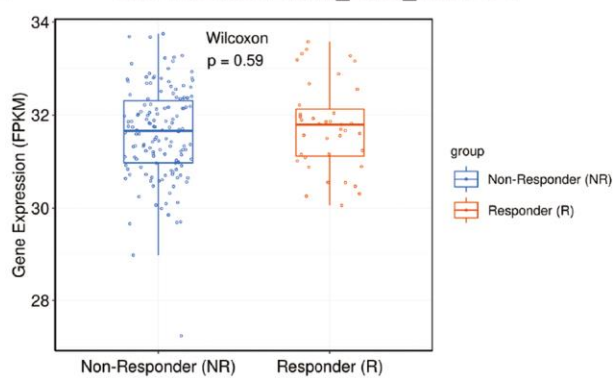
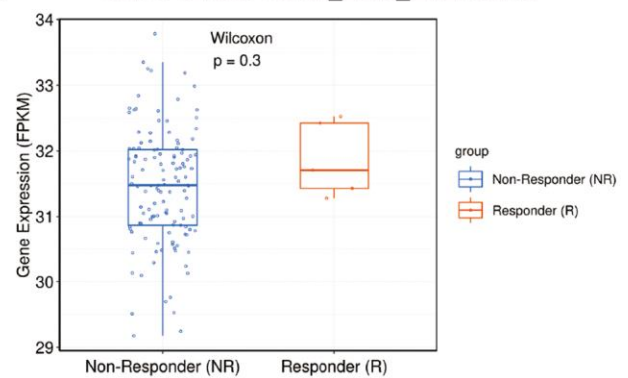


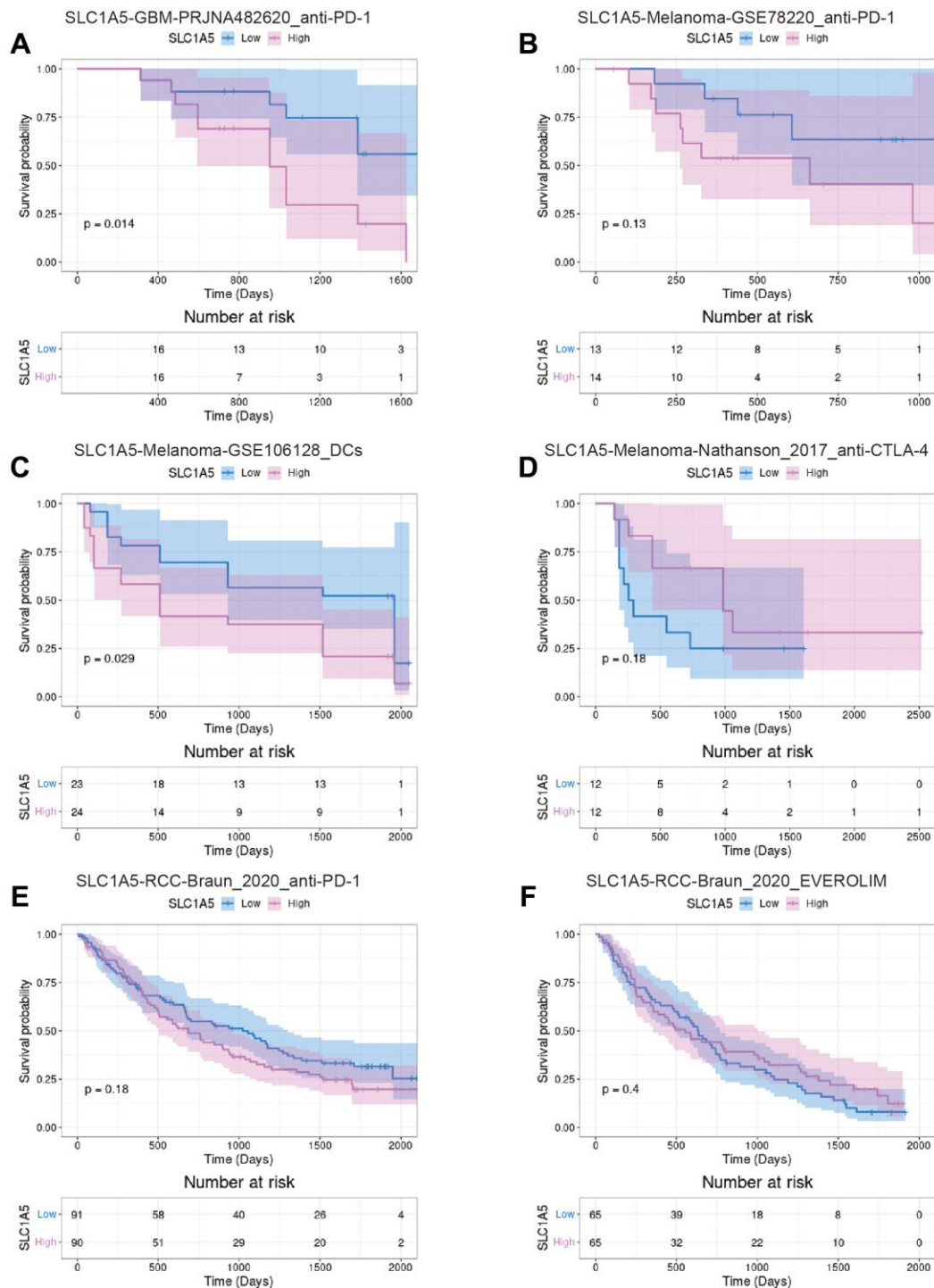
SUPPLEMENTARY FIGURES



Supplementary Figure 1. (A) The expression distribution of SLC1A5 in normal organs and tumor tissues of men and women is shown in the anatomical diagram of human organs. (B) Statistical graph of immunohistochemical staining results of SLC1A5 expression levels in glioma tissue and normal brain tissue. (C, D) Statistical results of transwell migration experiments following SLC1A5 knockdown in U251 and U118 cell lines. The labeled asterisk indicates the statistical *p* value (**p* < 0.05, ***p* < 0.01, ****p* < 0.001).

A SLC1A5-GBM-PRJNA482620_anti-PD-1**B** SLC1A5-Melanoma-GSE78220_anti-PD-1**C** SLC1A5-Melanoma-GSE106128_DCs**D** SLC1A5-Melanoma-Nathanson_2017_anti-CTLA-4**E** SLC1A5-RCC-Braun_2020_anti-PD-1**F** SLC1A5-RCC-Braun_2020_EVEROLIM

Supplementary Figure 2. Differential expression between responders and nonresponders. (A) The expression levels of SLC1A5 in responders and nonresponders among GBM patients following ai-PD-1 treatment in the PRJNA482620 cohort. (B) The expression levels of SLC1A5 in responders and nonresponders among melanoma patients following ai-PD-1 treatment in the GSE78220 cohort. (C) The expression levels of SLC1A5 in responders and nonresponders among melanoma patients following DC treatment in the GSE106128 cohort. (D) The expression levels of SLC1A5 in responders and nonresponders among melanoma patients following anti-CTLA4 treatment in the Nathanson_2017 cohort. (E) The expression levels of SLC1A5 in responders and nonresponders among renal cell carcinoma patients following anti-PD-1 treatment in the Braun_2020 cohort. (F) The expression levels of SLC1A5 in responders and nonresponders among renal cell carcinoma patients following EVEROLIM treatment in the Braun_2020 cohort.



Supplementary Figure 3. Survival analysis of patients after immune checkpoint inhibitor therapy. (A) Kaplan–Meier survival curves of GBM patients in the low expression and high expression subgroups of SLC1A5 following anti-PD-1 treatment in the PRJNA482620 cohort. (B) Kaplan–Meier survival curves of melanoma patients in the low expression and high expression subgroups of SLC1A5 following anti-PD-1 treatment in the GSE78220 cohort. (C) Kaplan–Meier survival curves of melanoma patients in the low expression and high expression subgroups of SLC1A5 following DC treatment in the GSE106128 cohort. (D) Kaplan–Meier survival curves of melanoma patients in the low expression and high expression subgroups of SLC1A5 following anti-CTLA-4 treatment in the Nathanson_2017 cohort. (E) Kaplan–Meier survival curves of renal cell carcinoma patients in the low expression and high expression subgroups of SLC1A5 following anti-PD-1 treatment in the Braun_2020 cohort. (F) Kaplan–Meier survival curves of renal cell carcinoma patients in the low expression and high expression subgroups of SLC1A5 following EVEROLIM treatment in the Braun_2020 cohort.