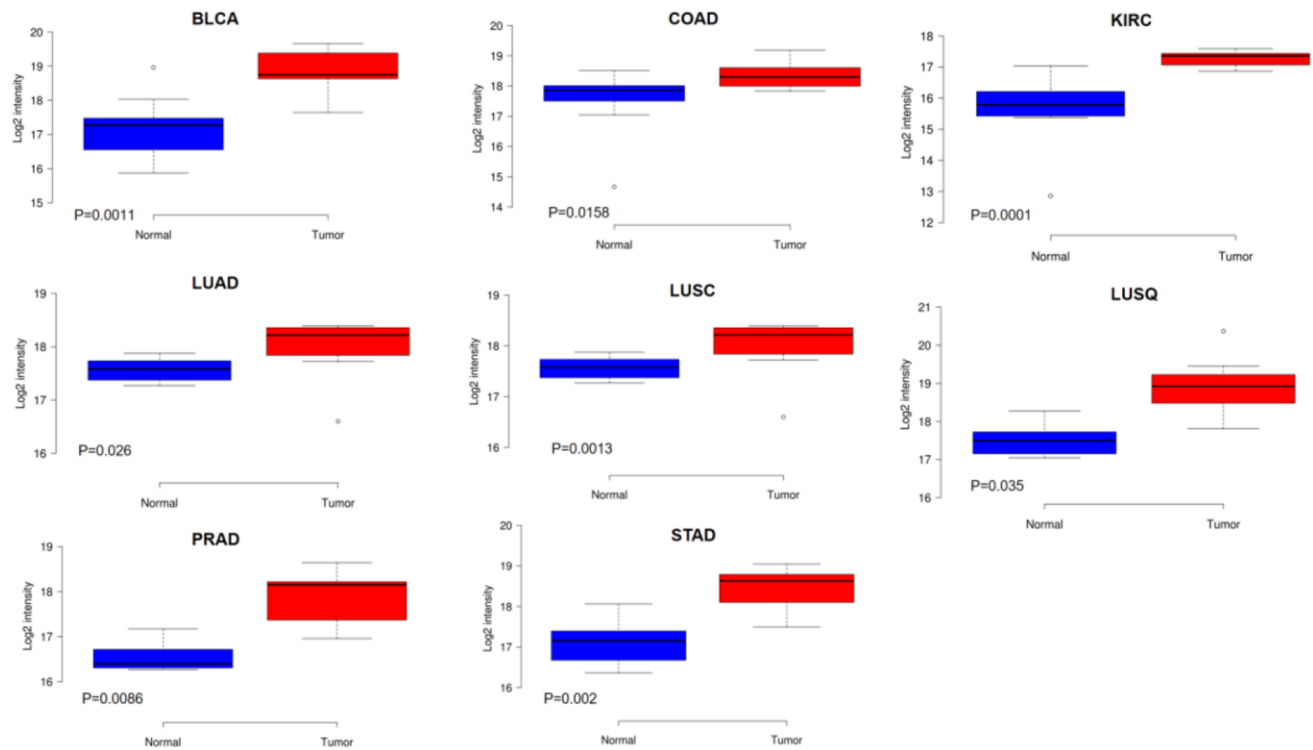
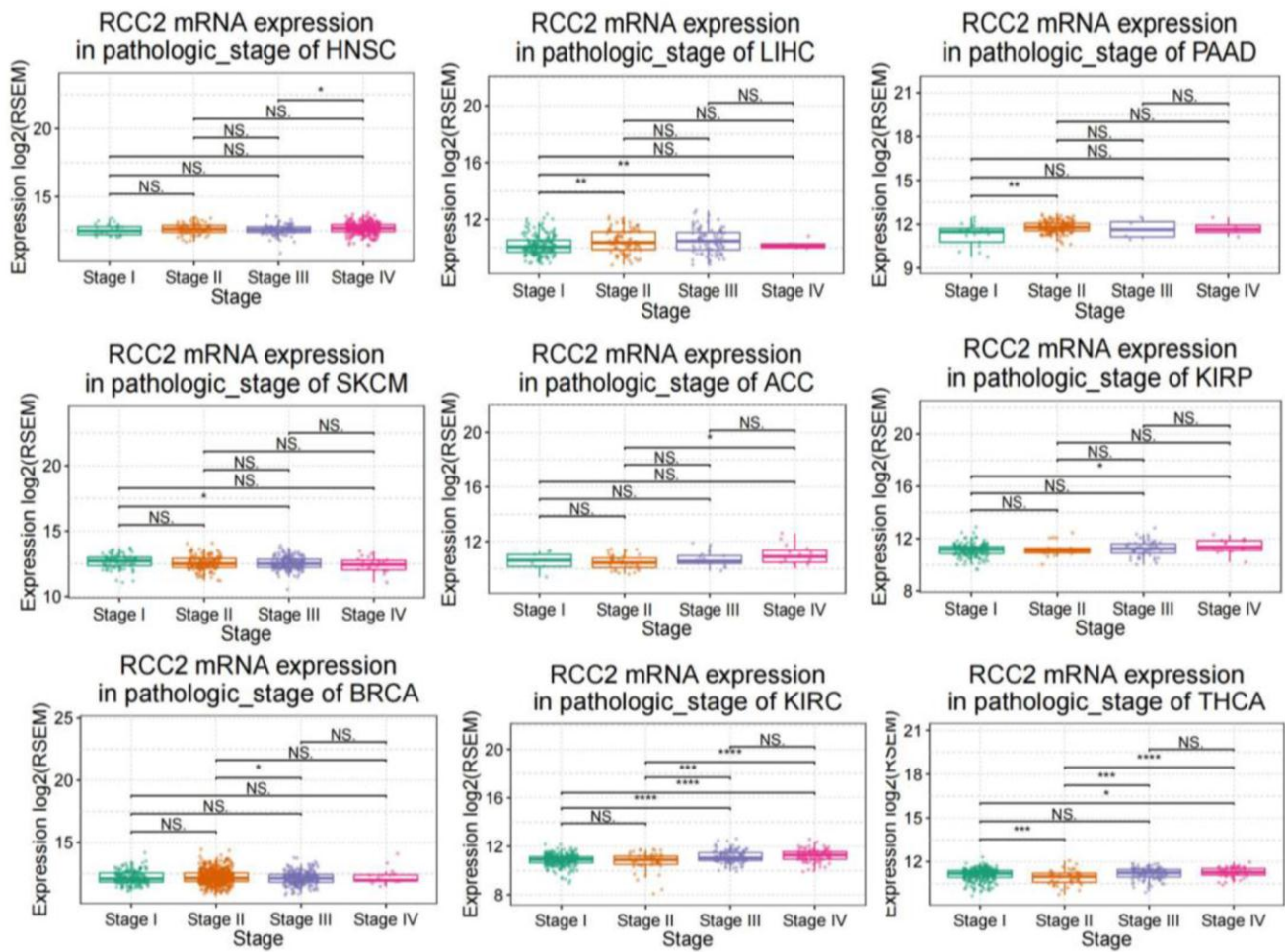


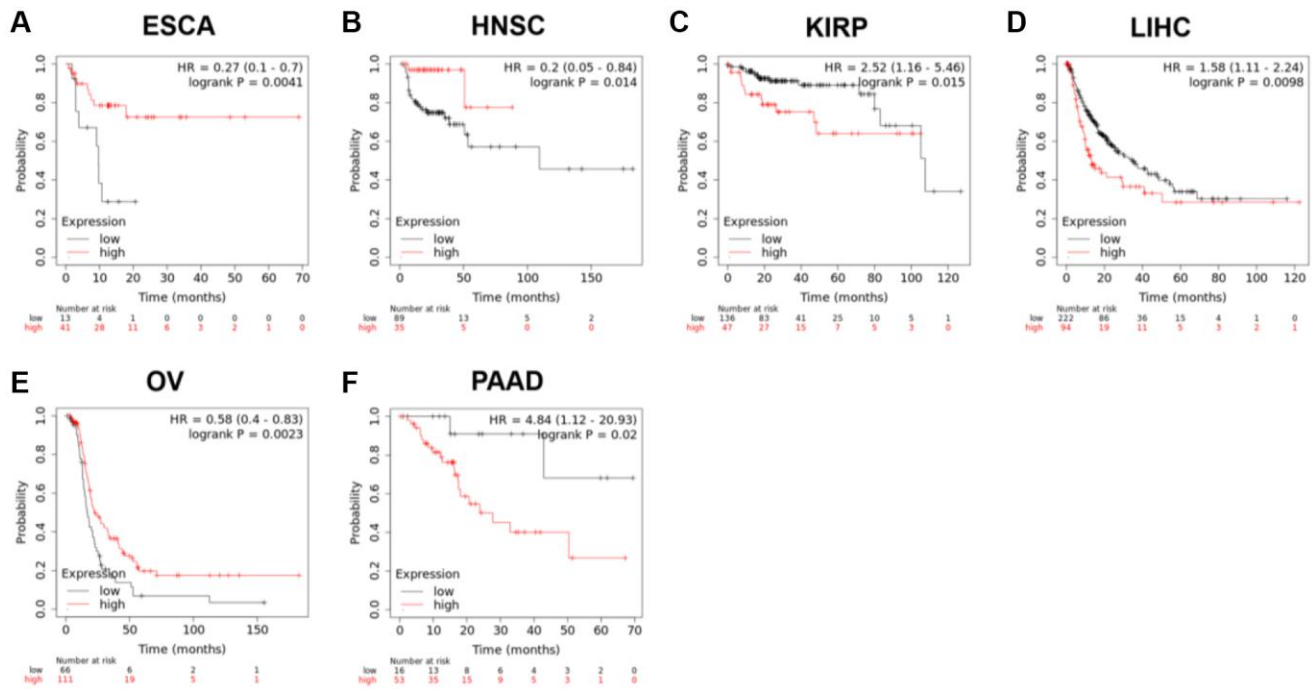
SUPPLEMENTARY FIGURES



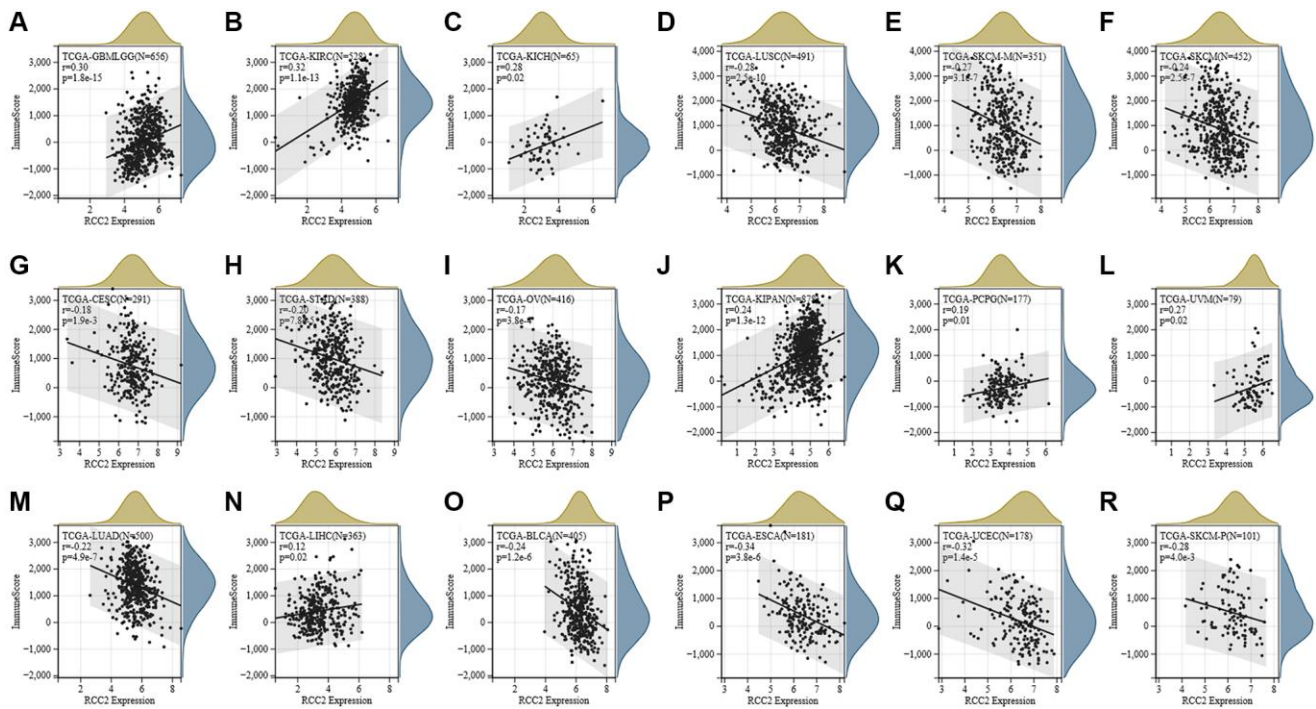
Supplementary Figure 1. RCC2 expression in proteomics data of 16 different cancer types. Only cancer types with $p < 0.05$ were illustrated.



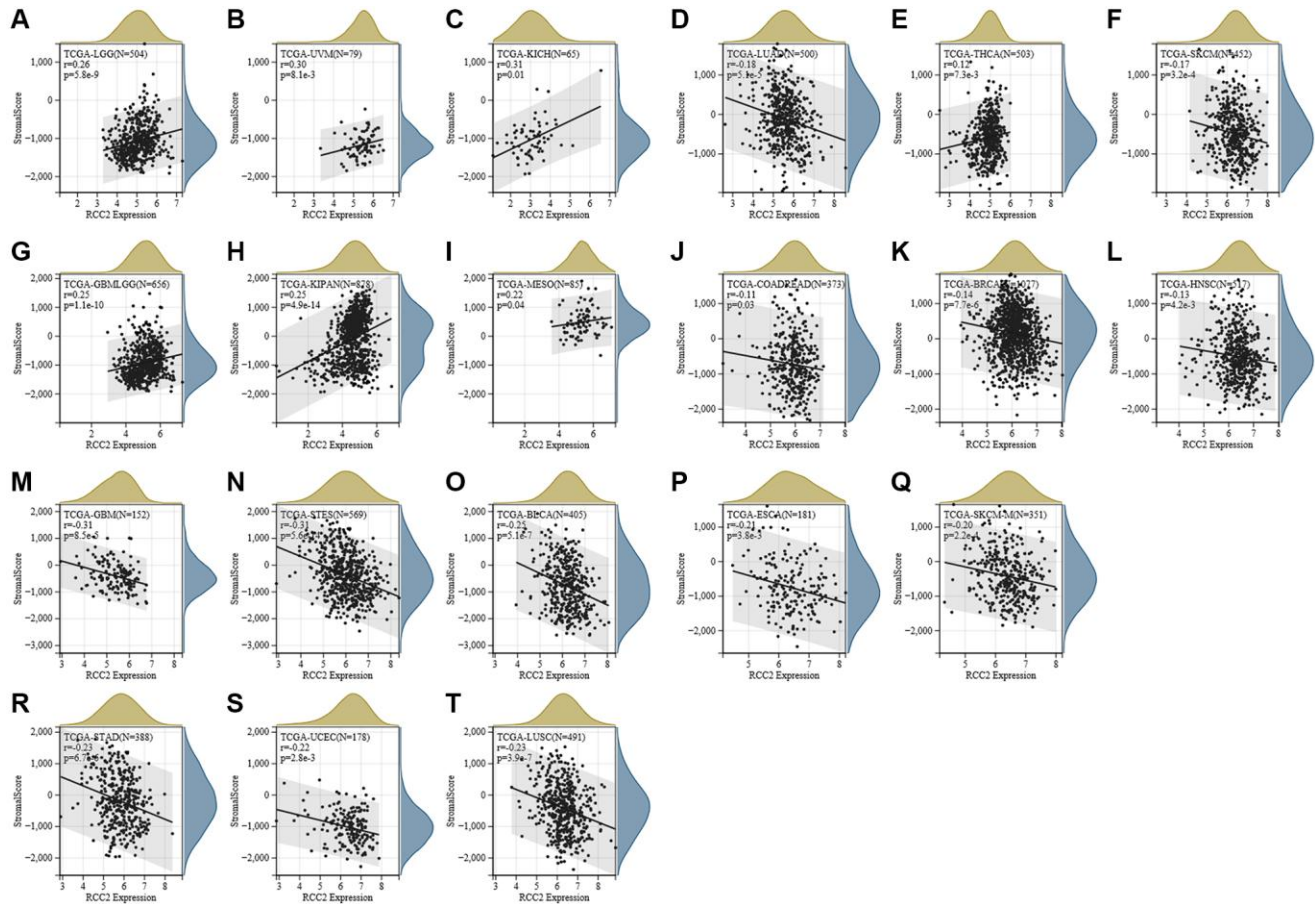
Supplementary Figure 2. *RCC2* mRNA expression in pathologic stages of HNSC, LIHC, PAAD, SKCM, ACC, KIRP, BRCA, KIRC, and THCA.



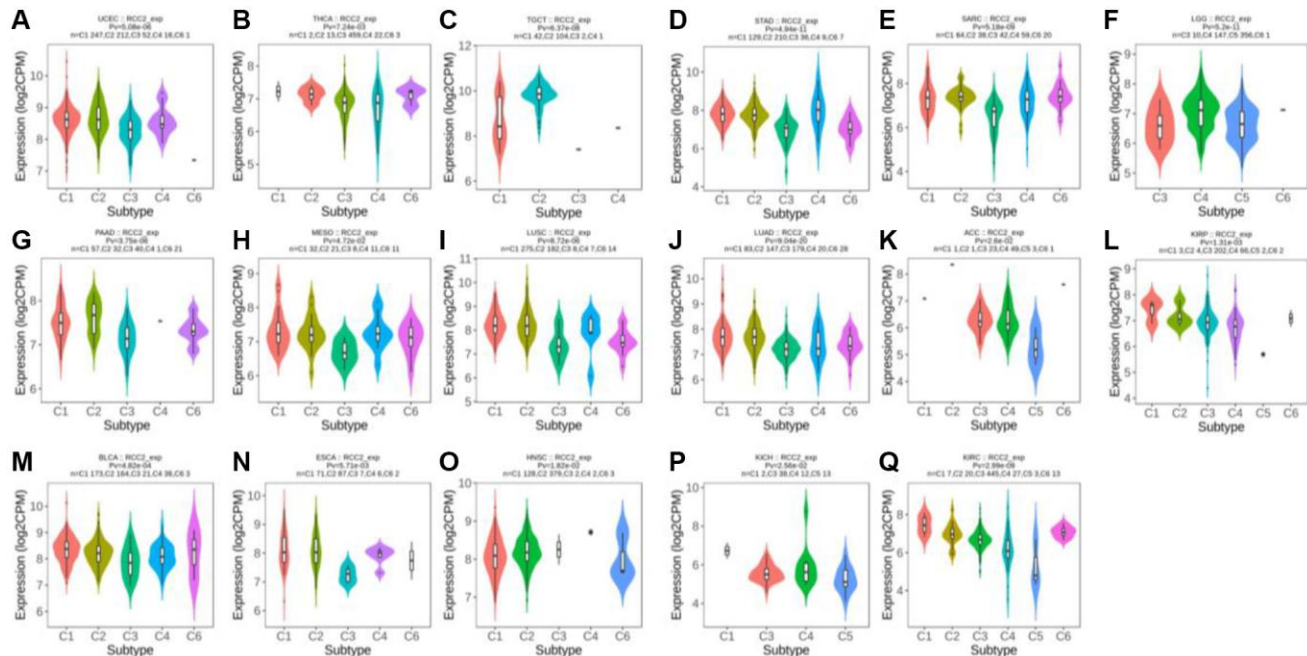
Supplementary Figure 3. (A-F) Relationship between *RCC2* expression and relapse-free survival (RFS) in TCGA pan-cancer. Only tumor types with log-rank $p < 0.05$ were displayed.



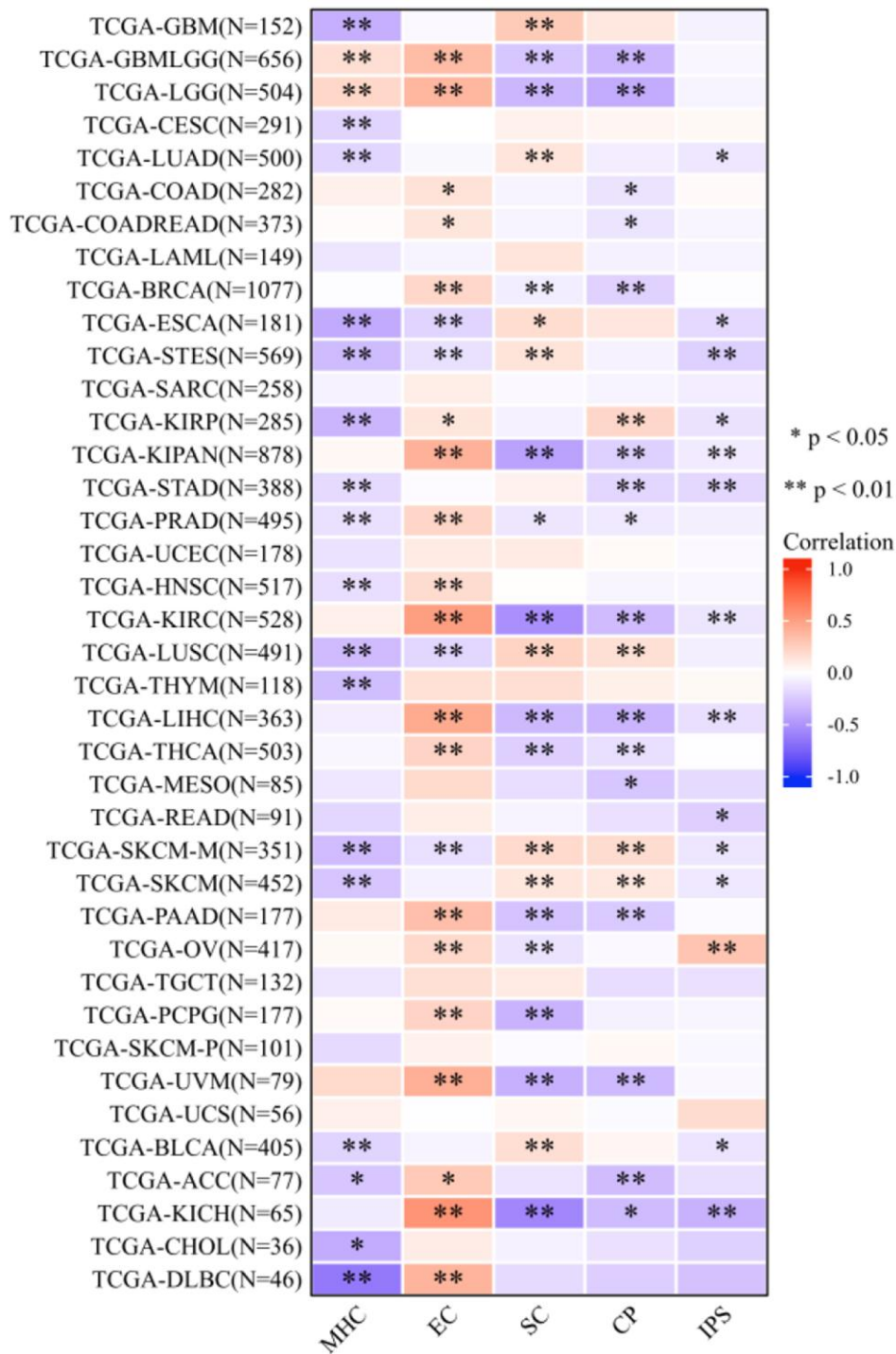
Supplementary Figure 4. (A-R) Correlation of *RCC2* expression with immune scores.



Supplementary Figure 5. (A-T) Correlation of *RCC2* expression with stromal scores.



Supplementary Figure 6. Expression levels of *RCC2* in different types of tumor immune subtypes. (A) UCEC. (B) THCA. (C) TGCT. (D) STAD. (E) SARC. (F) LGG. (G) PAAD. (H) MESO. (I) LUSC. (J) LUAD. (K) ACC. (L) KIRP. (M) BLCA. (N) ESCA. (O) HNSC. (P) KICH. (Q) KIRC.



Supplementary Figure 7. Correlation of *RCC2* expression with MHC, EC, SC, CP, and IPS scores in pan-cancer. Abbreviations: MHC: major histocompatibility complex; EC: effector cells; SC: suppressor cells; CP: checkpoints; IPS: immunophenoscore.