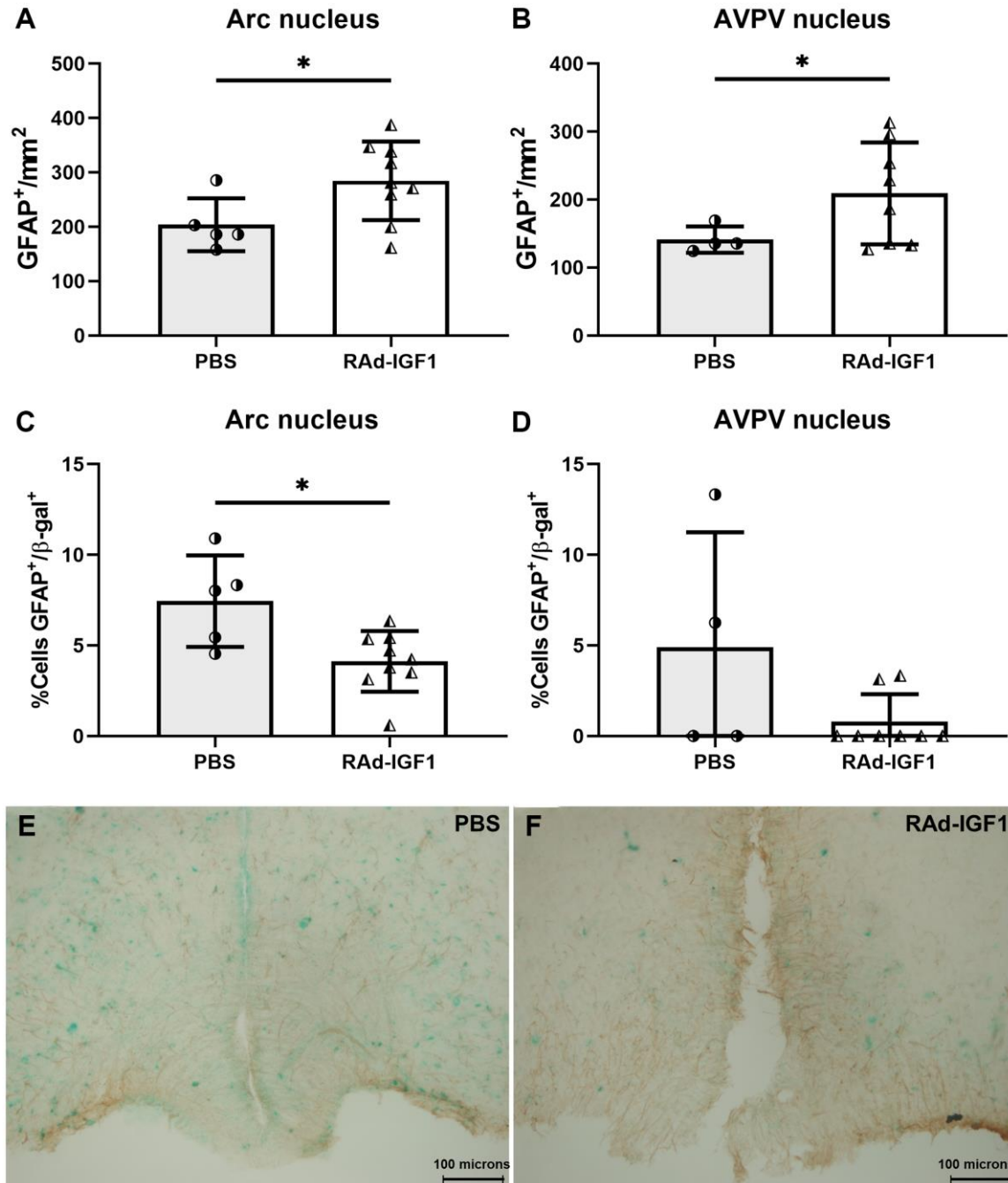
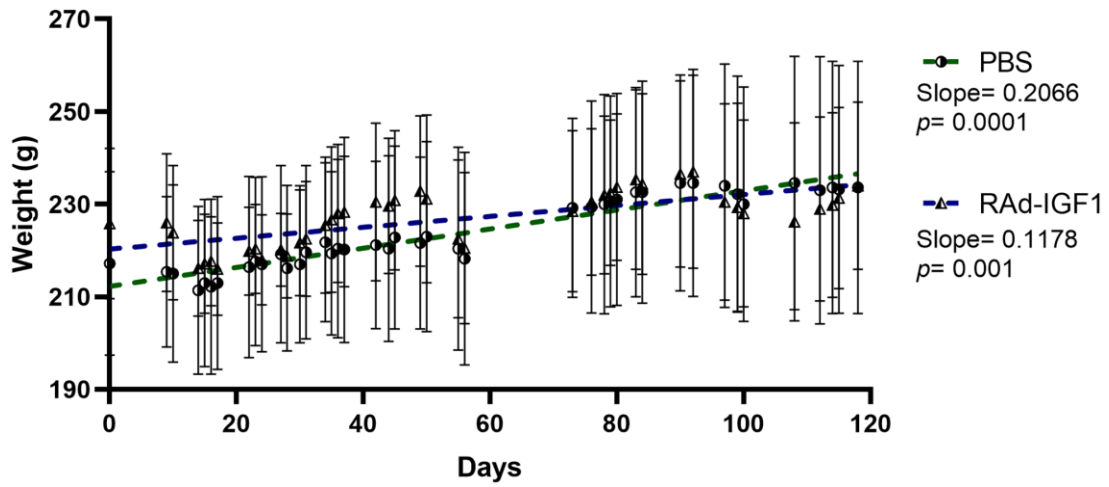


SUPPLEMENTARY FIGURES



Supplementary Figure 1. IGF1 gene therapy effect on the GFAP immunopositive cells. (A and B) Quantification of GFAP immunopositive cells. (C and D) Percentage of astrocytes presenting dual-label for GFAP and SA-β-Gal (blue) staining. Error bars represent SD (Arcuate: N_{RAd-IGF1} = 9; N_{PBS} = 5. AVPV: N_{RAd-IGF1} = 8; N_{PBS} = 4). *t* test with Welch's correction was used. Asterisks indicate significant (*p* < 0.05) differences. (E and F) Representative example of GFAP/ SA-β-Gal double staining (Total magnification of 200×; scale bars: 100 microns).



Supplementary Figure 2. Body weight curve of both groups of rats. Two-way ANOVA with repeated measures using the day and group as variable showed that during the 120 days experiment, differences in body weights between the control (PBS) and treatment (RAd-IGF1) groups were not significant. Error bars represent SD ($N_{\text{RAd-IGF1}} = 13$; $N_{\text{PBS}} = 9$).