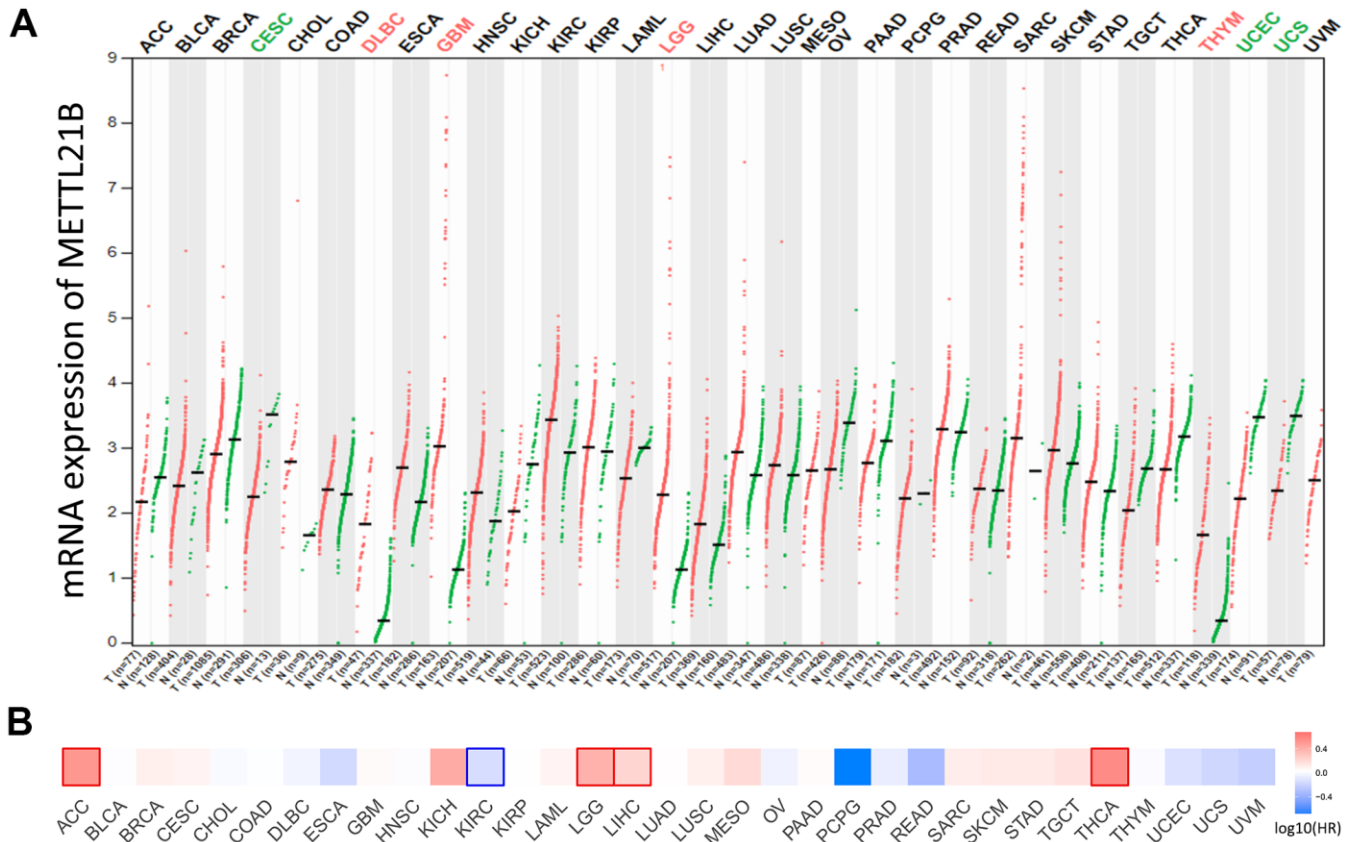
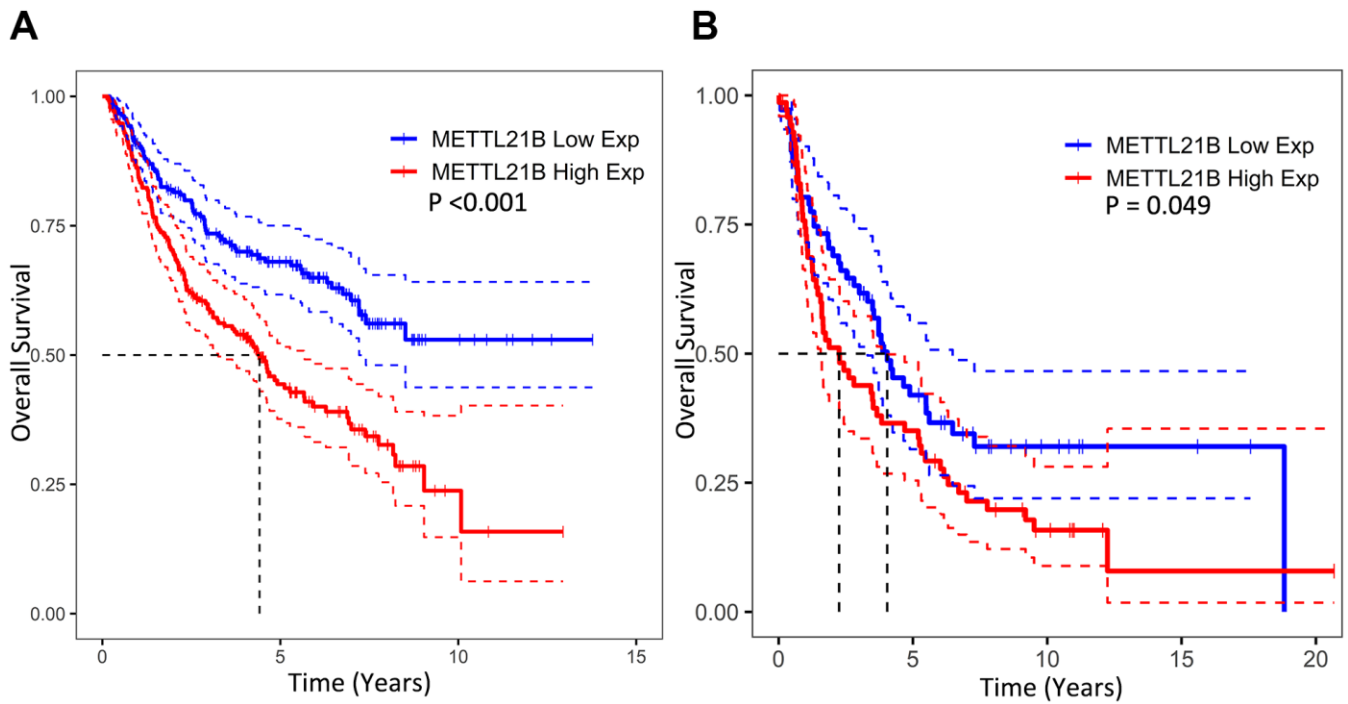


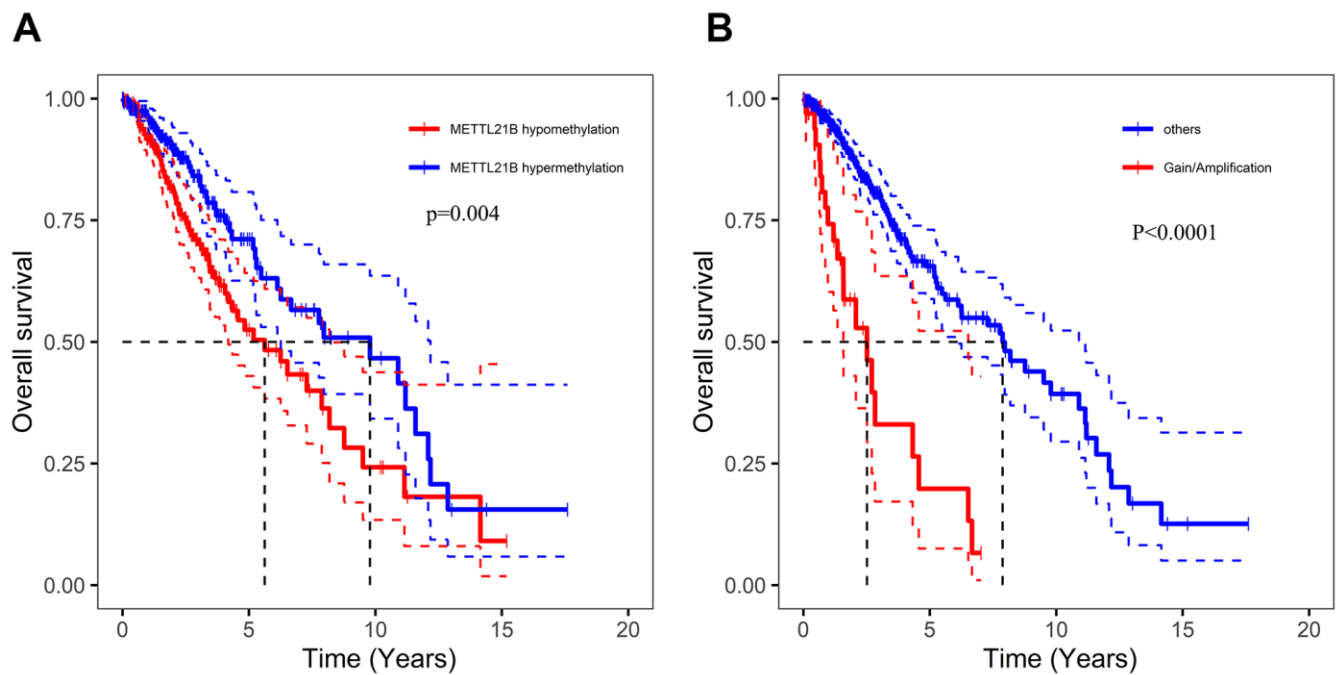
SUPPLEMENTARY FIGURES



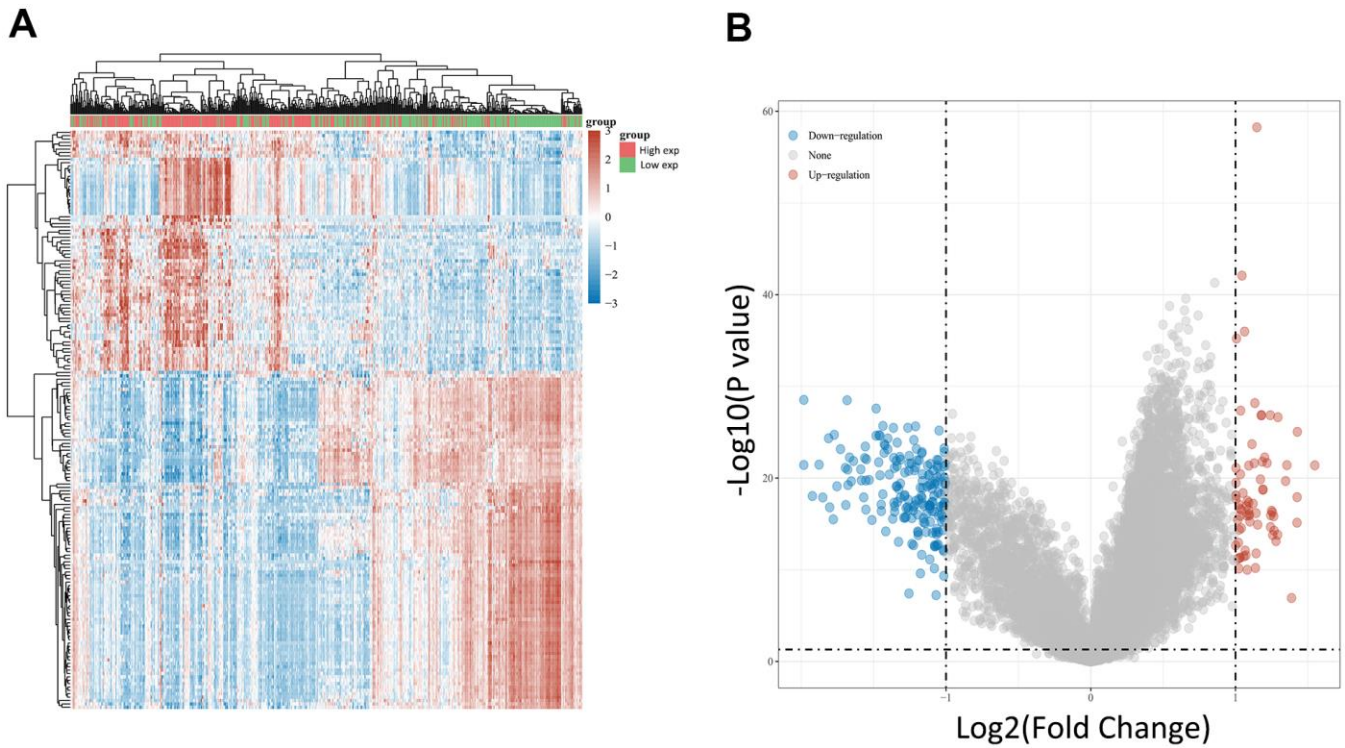
**Supplementary Figure 1. Pan-cancer analysis of METTL21B expression among 33 types of cancers from TCGA.** (A) The difference in expression of METTL21B between tumor tissues and normal tissues of 33 types of human cancers from TCGA and GTEx database. Red/Green fonts indicate statistically significant differences. (B) Survival heat map of 33 cancer types in TCGA. Red/Blue border lines indicate statistically significant differences.



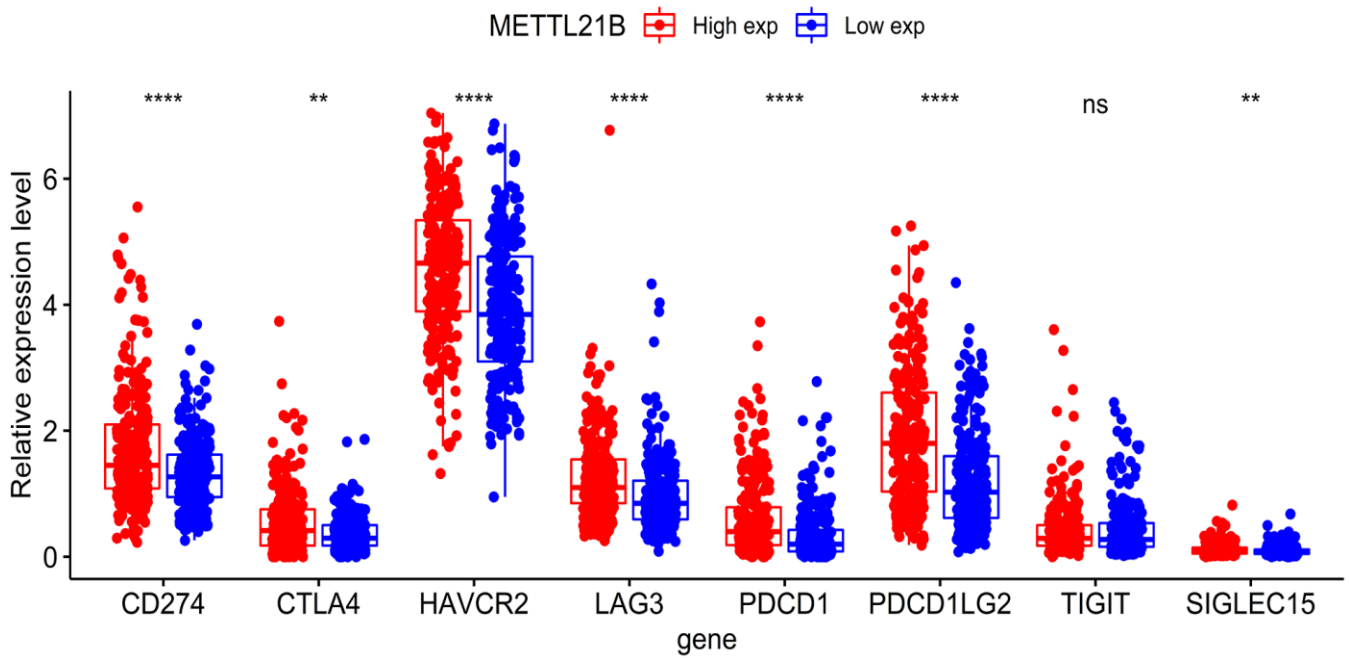
**Supplementary Figure 2.** The effect of METTL21B expression on prognosis of patients with LGG in CGGA database (A) and Rembrandt database (B).



**Supplementary Figure 3.** The effect of METTL21B methylation (A) and CNV (B) on prognosis of patients with LGG.



Supplementary Figure 4. Heatmap (A) and volcano plot (B) for DEGs.



Supplementary Figure 5. The expression differences of 8 immune checkpoints between low and high METTL21B expression group. \*\* $p < 0.01$ ; \*\*\*\* $p < 0.0001$ ; ns: no significance.