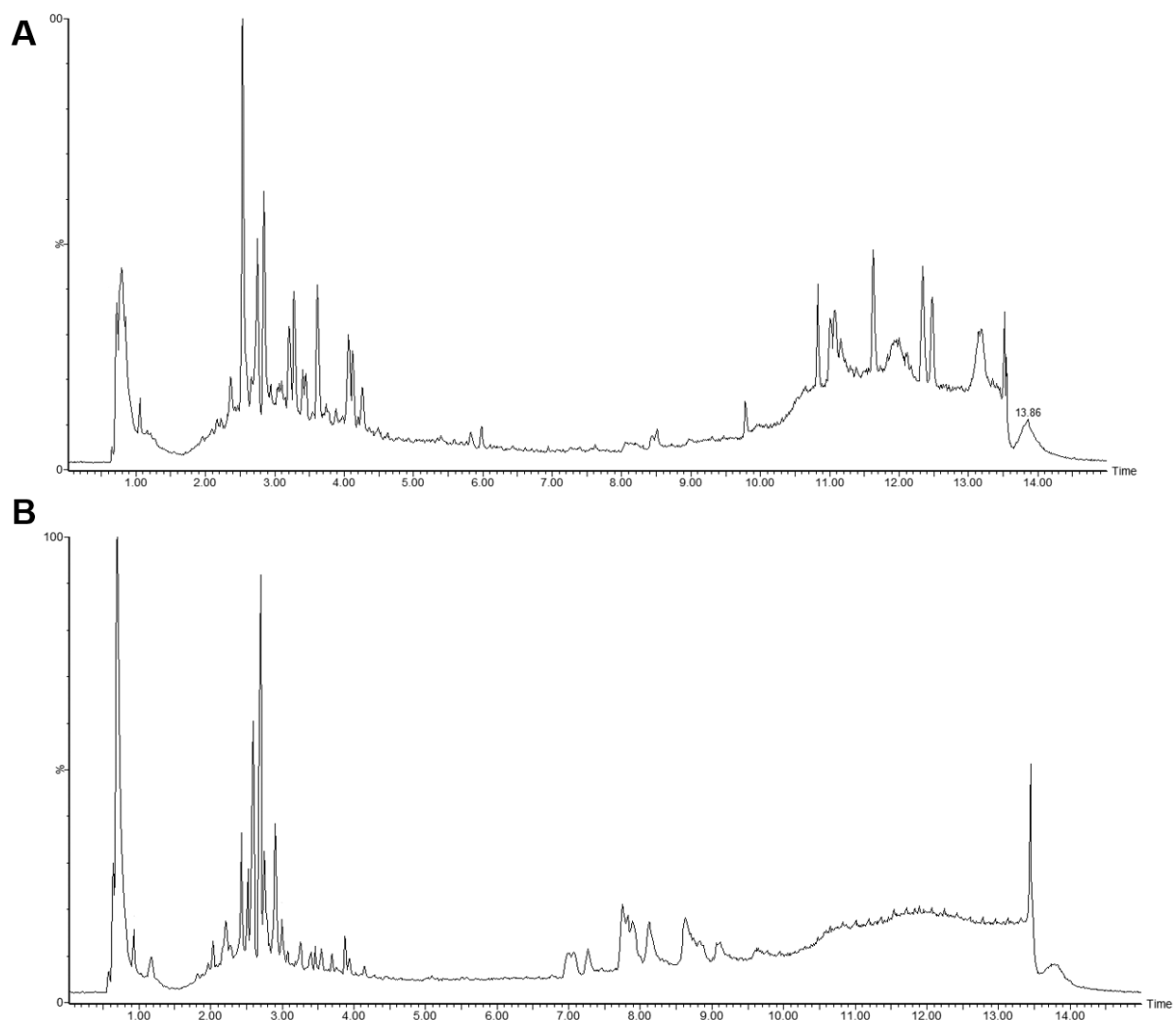
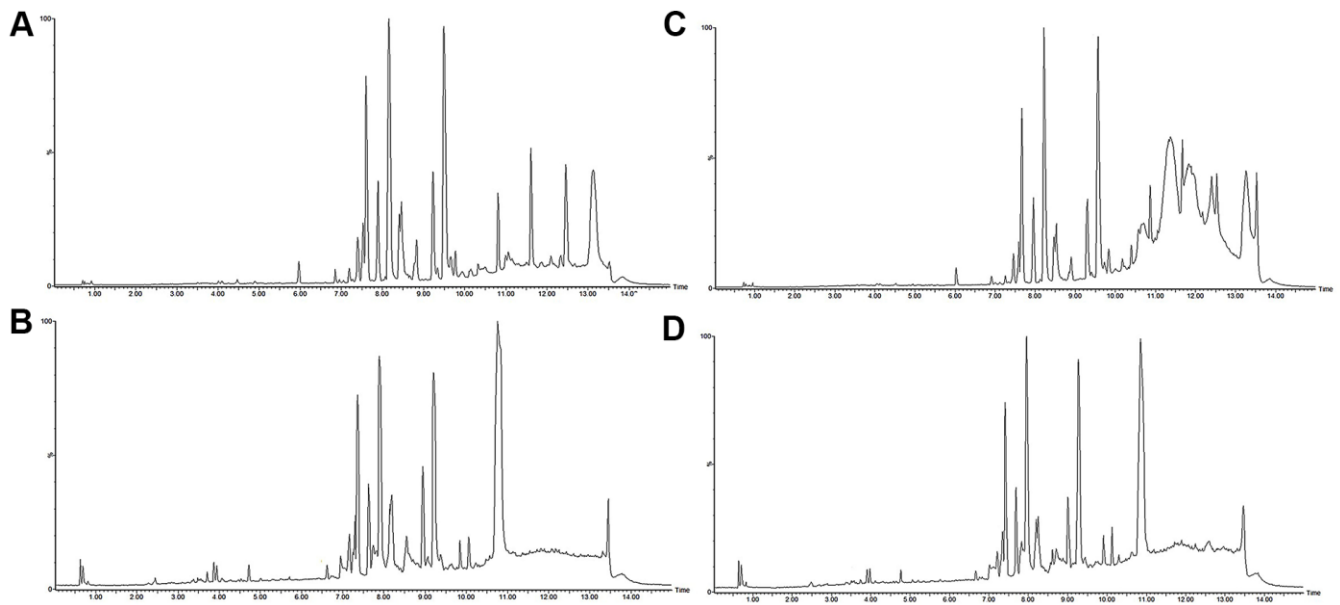


## SUPPLEMENTARY FIGURES



**Supplementary Figure 1.** The total ion chromatogram of WSYGD extract in positive ion (A) and negative ion (B).



**Supplementary Figure 2.** Chromatograms of WSYGD in mouse plasma by UPLC-ESI-Q-TOF MS: (A) total ion chromatogram in positive ion mode of blank, (B) total ion chromatogram in negative ion mode of blank, (C) total ion chromatogram in positive ion mode of WSYGD, (D) total ion chromatogram in negative ion mode of WSYGD.