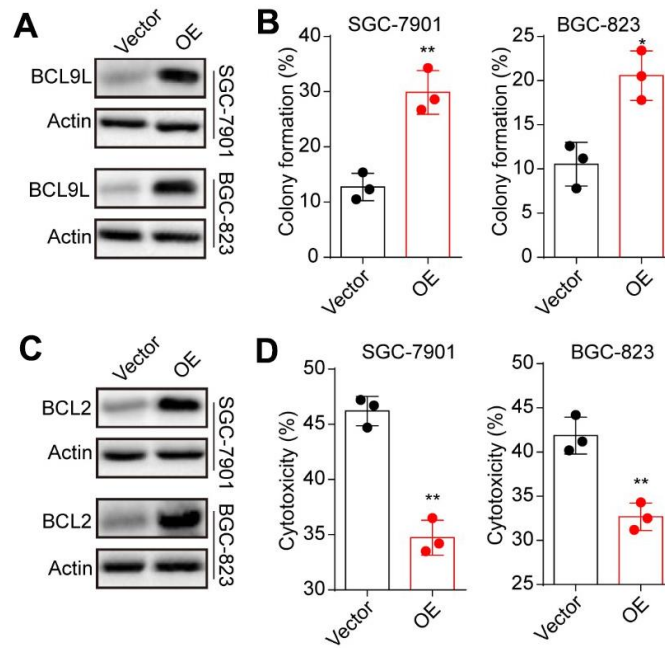


**SUPPLEMENTARY FIGURE**



**Supplementary Figure 1.** (A) Western blotting of BCL9L in SGC-7901/BGC-823 (Vector) and BCL9L overexpression SGC-7901/BGC-823 cells (OE). (B) ITGB1- SGC-7901/BGC-823 (Vector) and BCL9L overexpression SGC-7901/BGC-823 cells (OE) were sorted and seeded in 3D collagen gels. The colony formation rates were calculated on day3. (C) Western blotting of BCL2 in SGC-7901/BGC-823 (Vector) and BCL2 overexpression SGC-7901/BGC-823 cells (OE). (D) The ITGB1+ SGC-7901/BGC-823 (Vector) and BCL2 overexpression SGC-7901/BGC-823 cells (OE) cells were sorted and cultured in 3D collagen gel (6 days). Then tumor cells were treated with 5-FU (5 µg/ml) combining C-IN2 (5 µM) and the cell apoptosis was examined. \* Indicates P <0.05, \*\* indicates P <0.01.