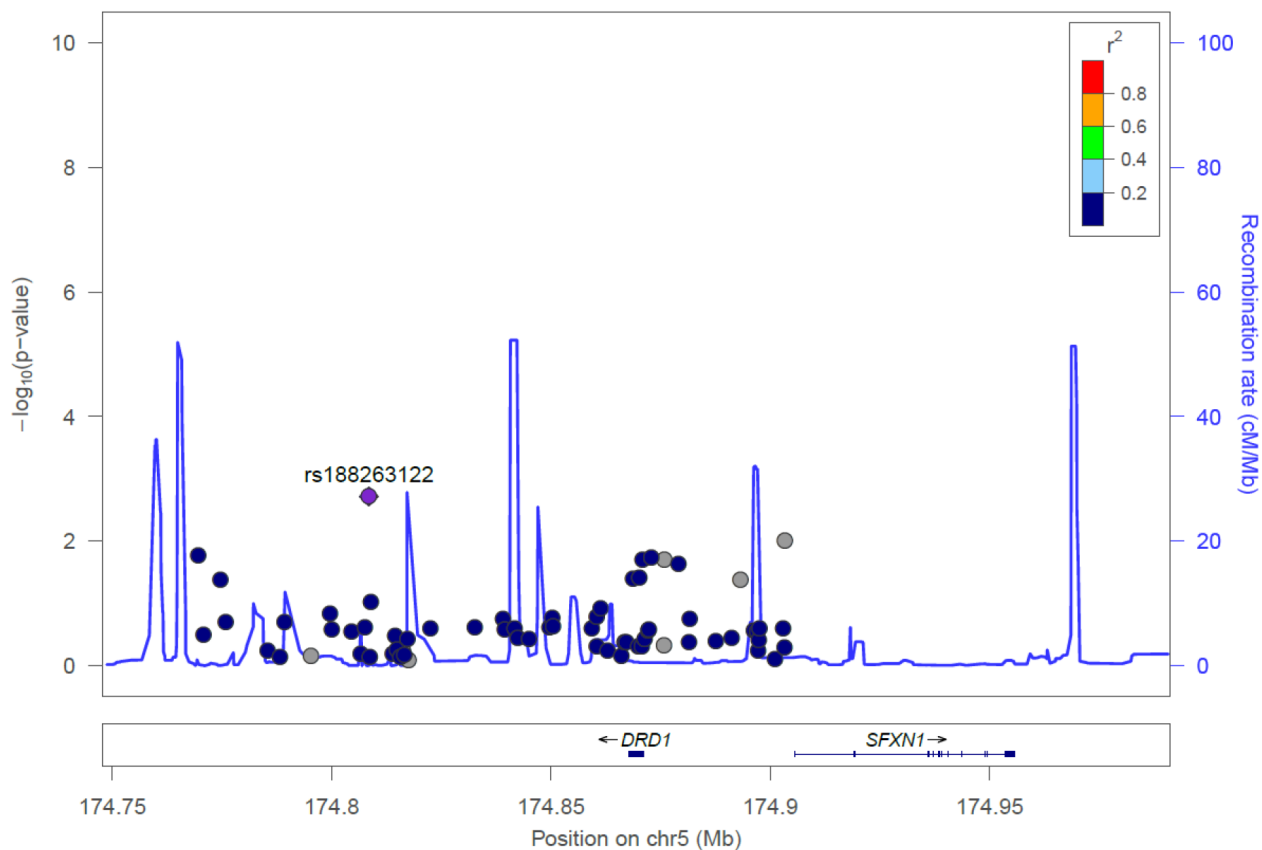
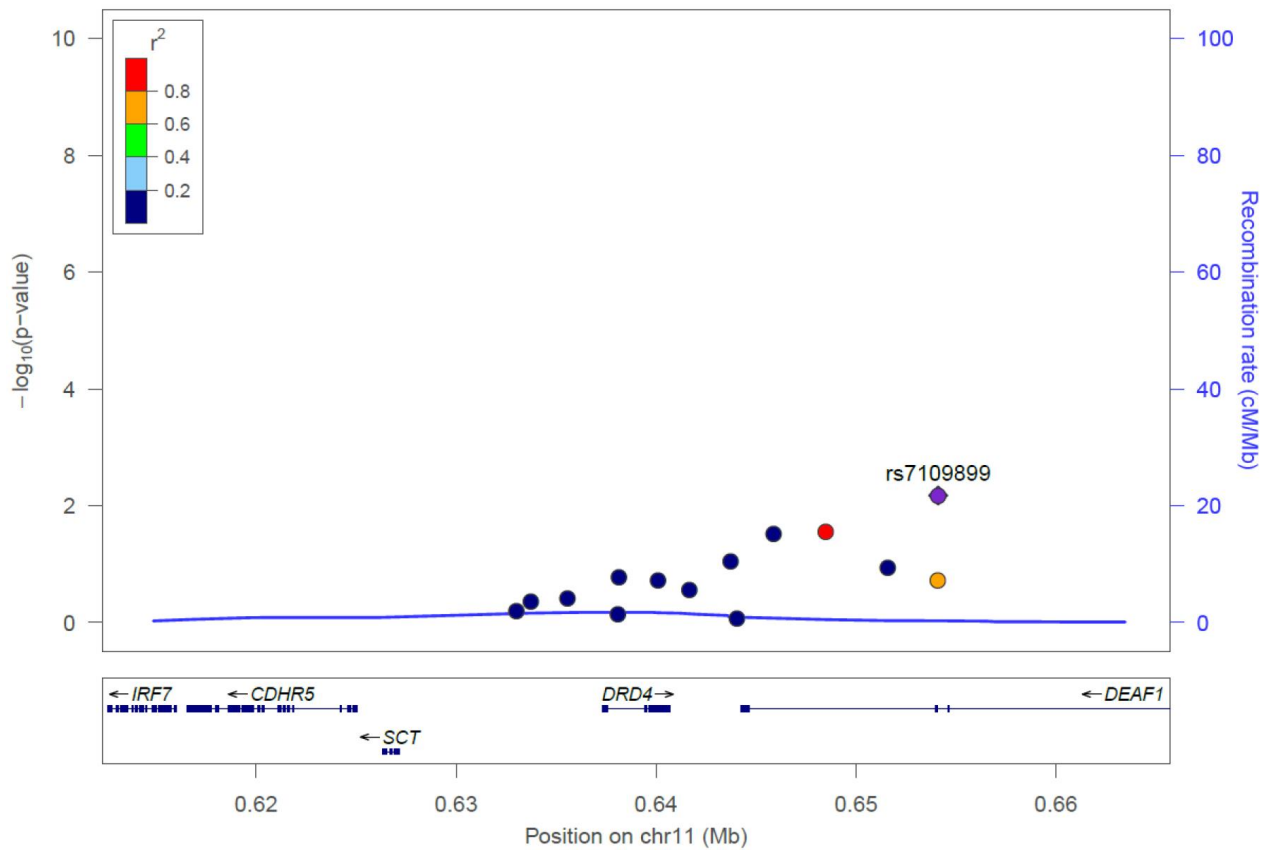


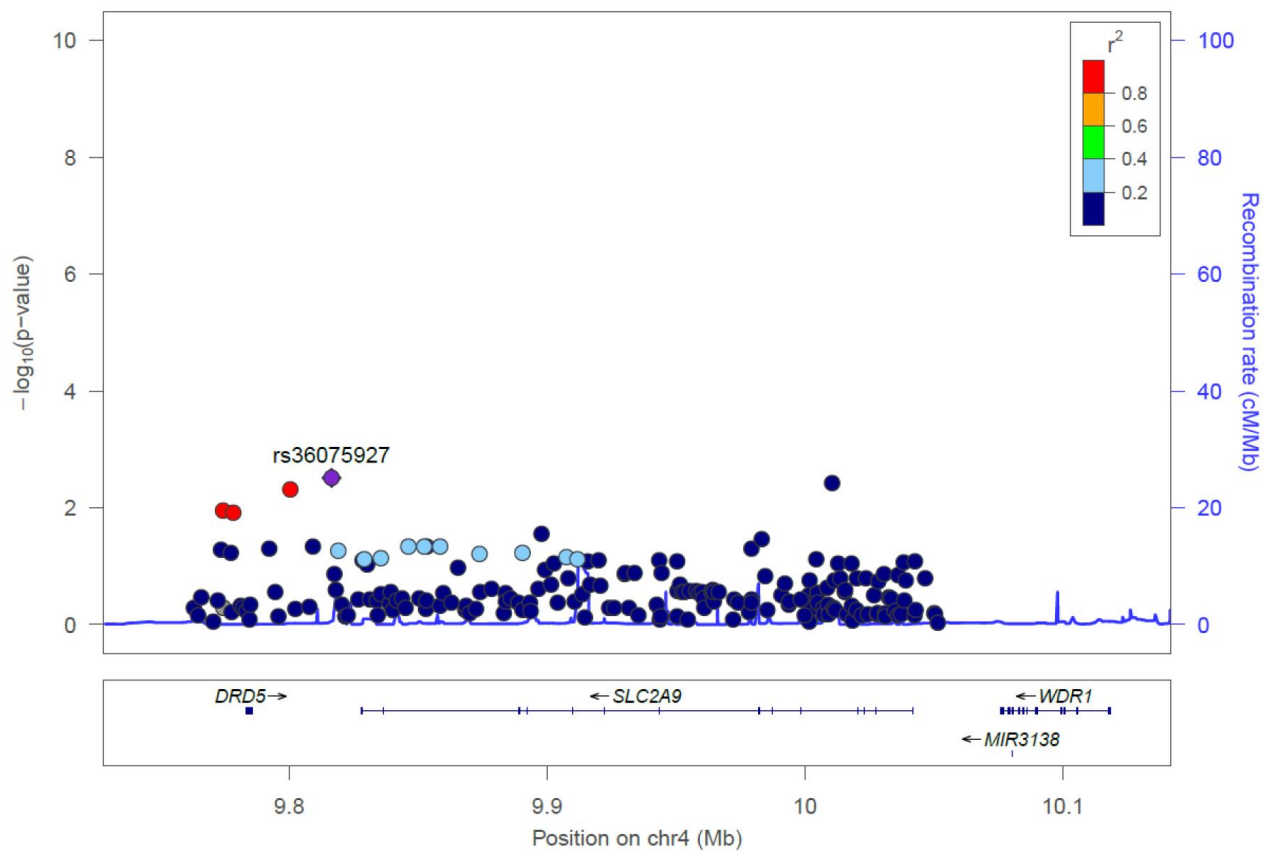
SUPPLEMENTARY FIGURES



Supplementary Figure 1. Locus zoom plot for the *DRD1* locus for cognitive aging in the Taiwan Biobank. SNPs are shown by their position on the chromosome against their association ($-\log_{10} P$) with cognitive aging. SNPs are colored to reflect their linkage disequilibrium with the top SNP (rs188263122) near *DRD1* (*ARL2BPP6-DRD1*). Estimated recombination rates are plotted in cyan using Asian subjects from the 1000 Genomes Project. This plot was generated using LocusZoom.



Supplementary Figure 2. Locus zoom plot for the *DRD4* locus for cognitive aging in the Taiwan Biobank. SNPs are shown by their position on the chromosome against their association ($-\log_{10} P$) with cognitive aging. SNPs are colored to reflect their linkage disequilibrium with the top SNP (rs7109899) near *DRD4* (*DRD4-DEAF1*). Estimated recombination rates are plotted in cyan using Asian subjects from the 1000 Genomes Project. This plot was generated using LocusZoom.



Supplementary Figure 3. Locus zoom plot for the *DRD5-SLC2A9* locus for cognitive aging in the Taiwan Biobank. SNPs are shown by their position on the chromosome against their association ($-\log_{10} P$) with cognitive aging. SNPs are colored to reflect their linkage disequilibrium with the top SNP (rs36075927) in *SLC2A9*. Estimated recombination rates are plotted in cyan using Asian subjects from the 1000 Genomes Project. This plot was generated using LocusZoom.