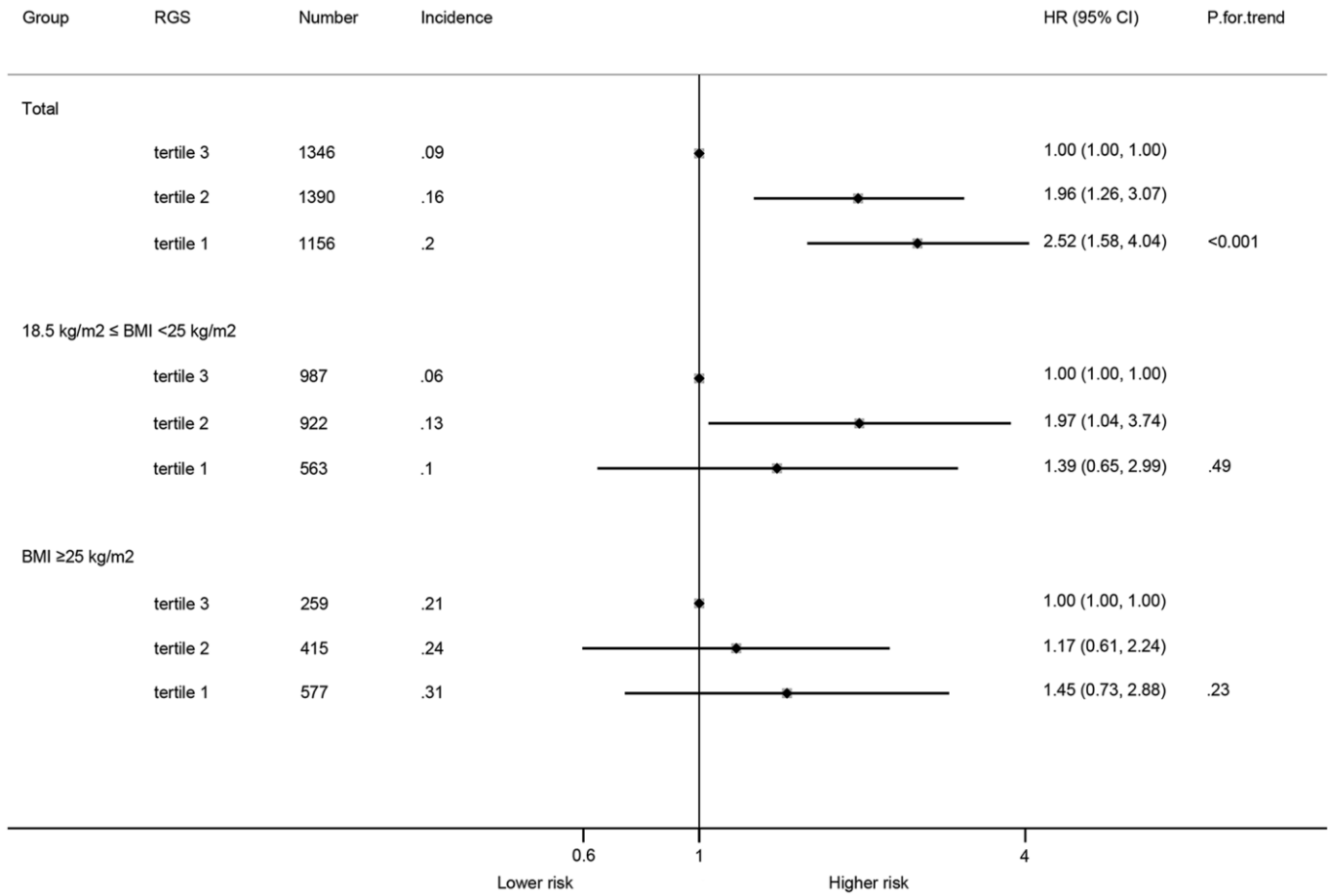
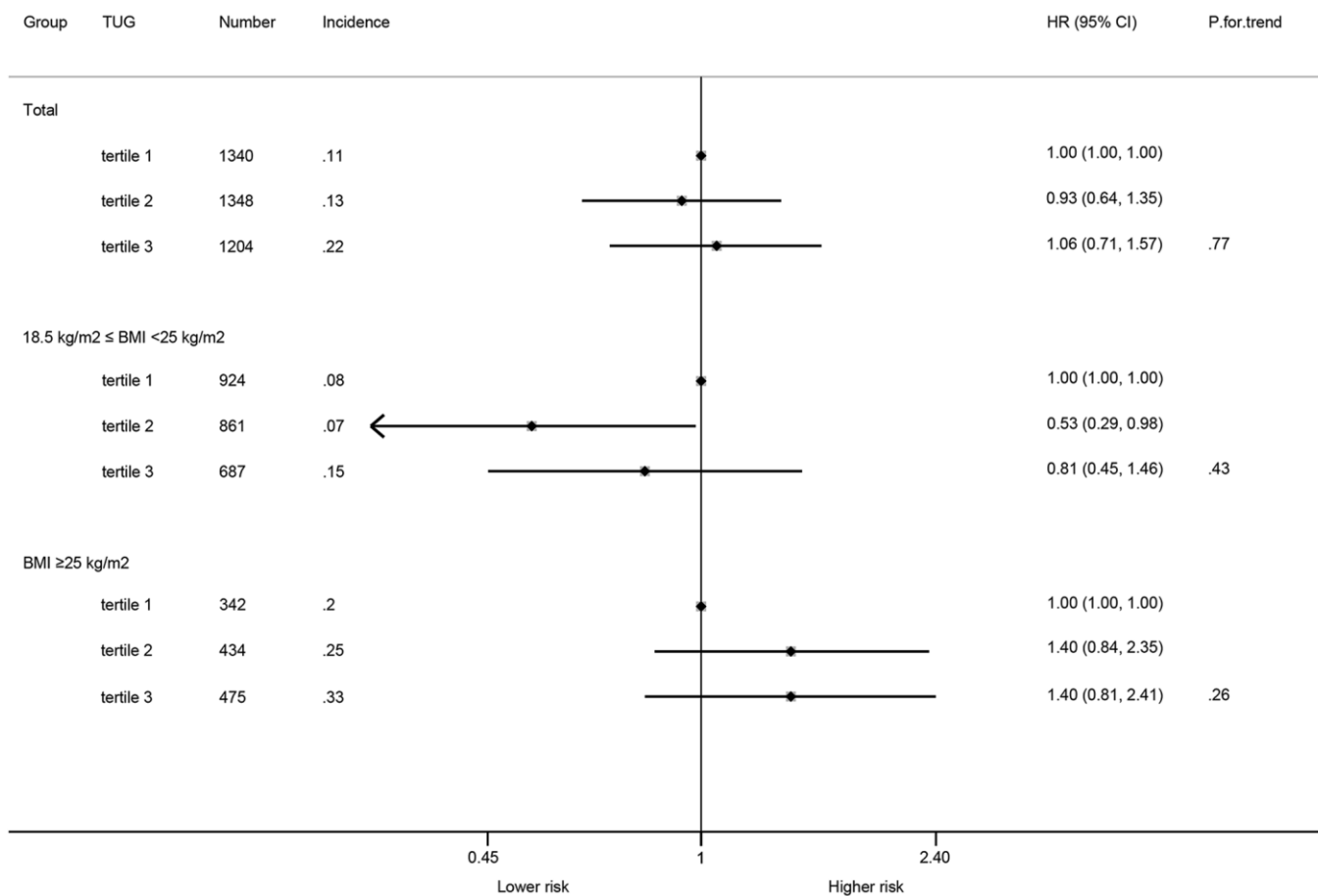


**SUPPLEMENTARY FIGURES**



**Supplementary Figure 1. Associations between RGS and incident type 2 diabetes mellitus.** The HRs and 95% CIs above were adjusted for sex, age, education, occupation, smoking status, alcohol use and self-rated health. Abbreviations: RGS: relative grip strength; Number: number of participants; Incidence: Incidence of T2DM per 100 person-year.



**Supplementary Figure 2. Associations between TUG test and incident type 2 diabetes mellitus.** The HRs and 95% CIs above were adjusted for sex, age, education, occupation, alcohol use, self-rated health and body mass index. Abbreviations: TUG test: timed up and go test; Number: number of participants; Incidence: Incidence of T2DM per 100 person-year.