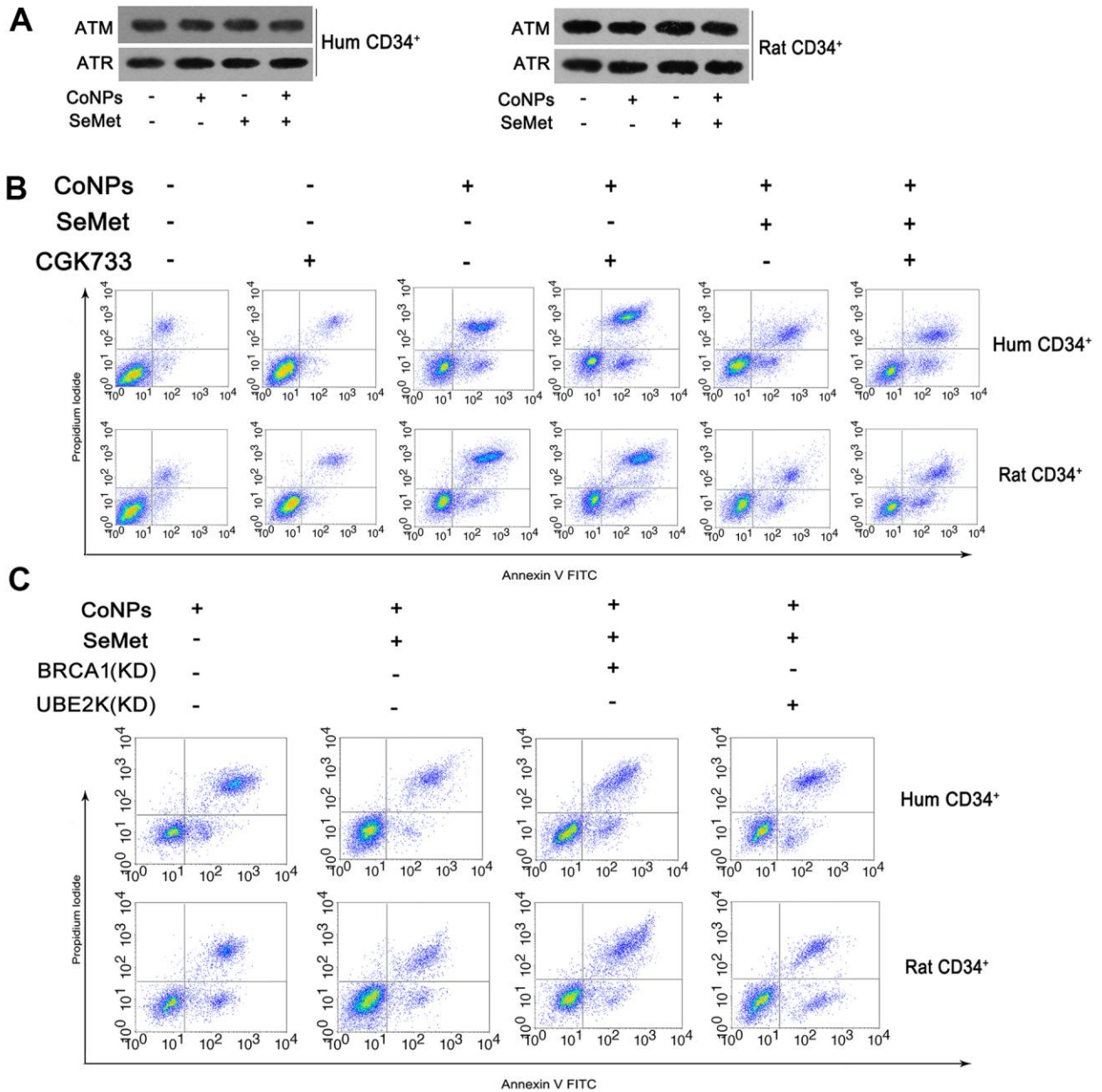
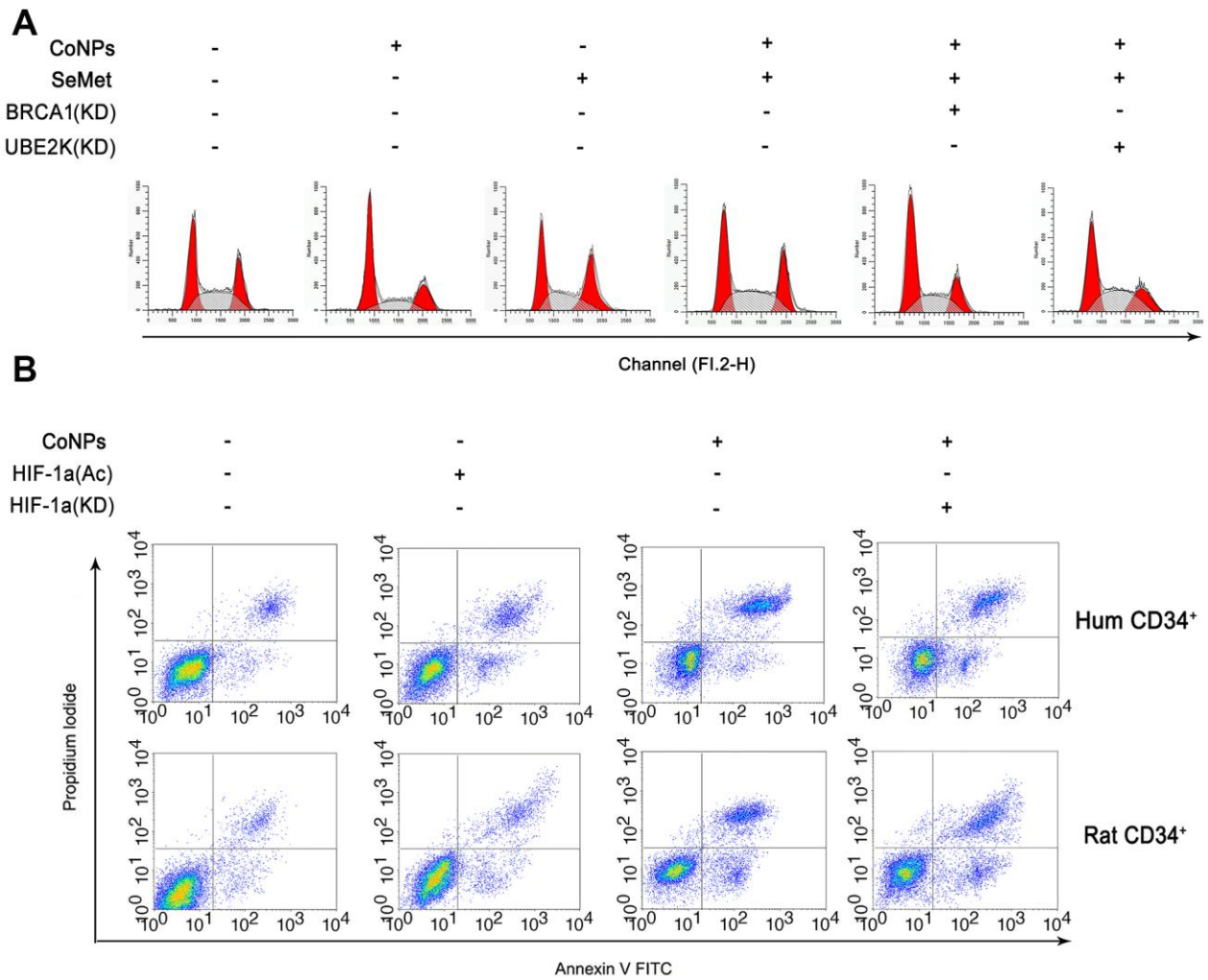


SUPPLEMENTARY FIGURES



Supplementary Figure 1. The protective effects of SeMet are through modulating ATM/ATR and HIF-1 α . (A) Western blot was conducted to detect ATM and ATR protein levels after the treatments with CoNPs and SeMet. (B) The apoptosis rate after treatments with CoNPs, SeMet and CGK733. (C) The apoptosis rate after treatments with CoNPs and SeMet, or knockdown of BRCA1 and UBE2K.



Supplementary Figure 2. BRCA1 and HIF-1 α mediated the toxicity of CoNPs and the protection of SeMet. (A) the alteration of cell cycle after treatments with CoNPs and SeMet, or knockdown of BRCA1 and UBE2K. (B) The apoptosis rate after treatments with CoNPs and HIF-1 α activator, or knockdown of HIF-1 α .