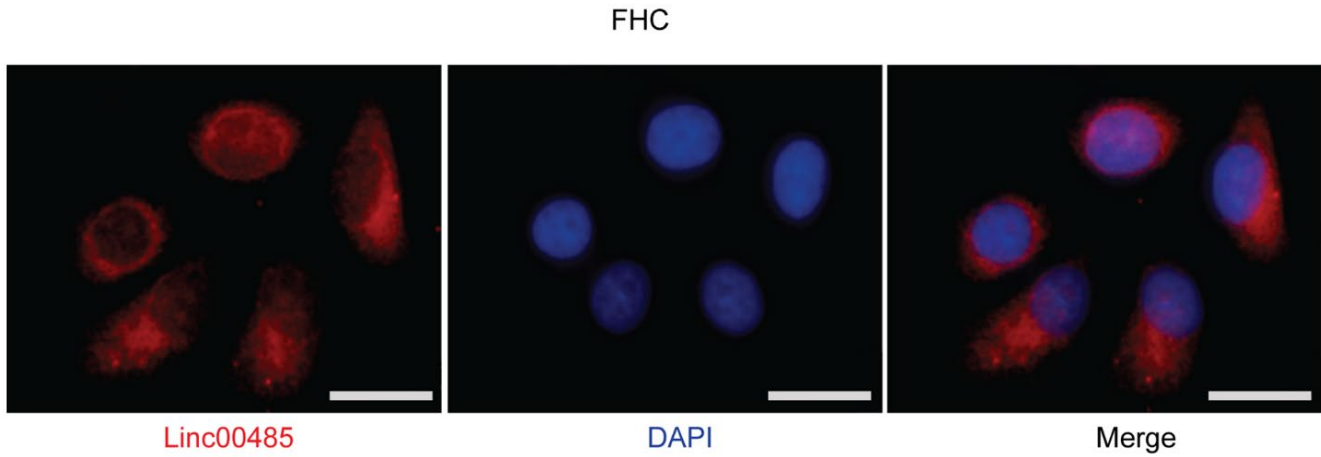
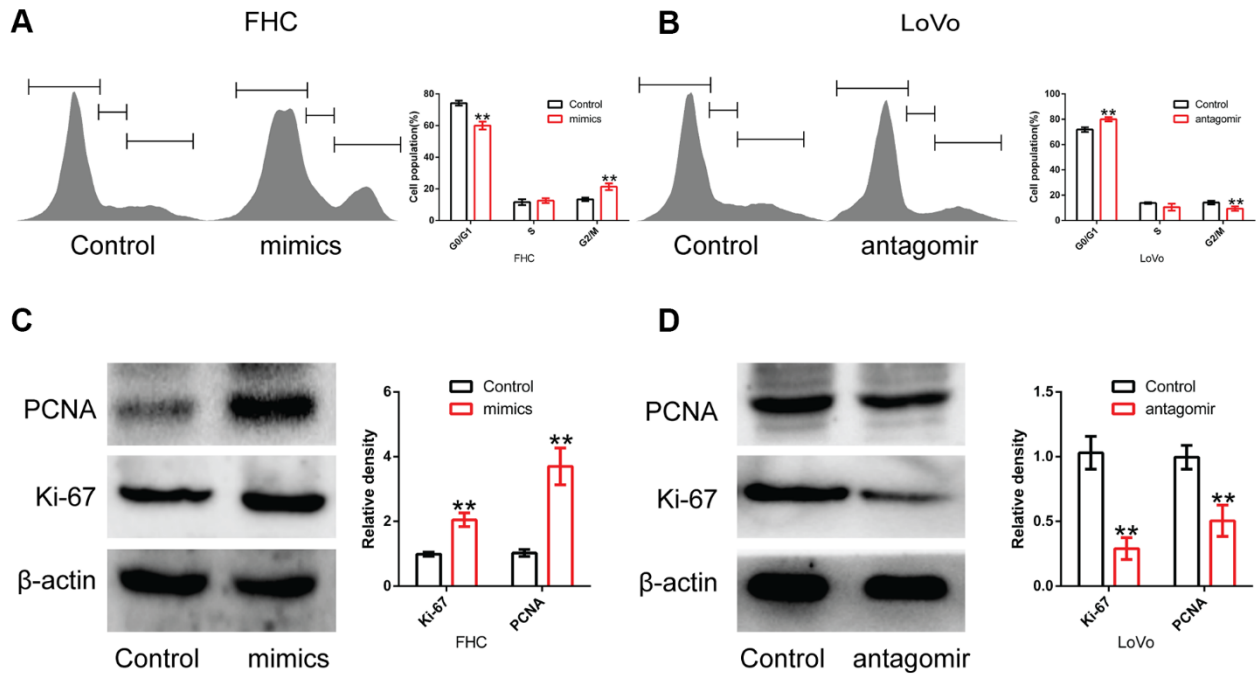


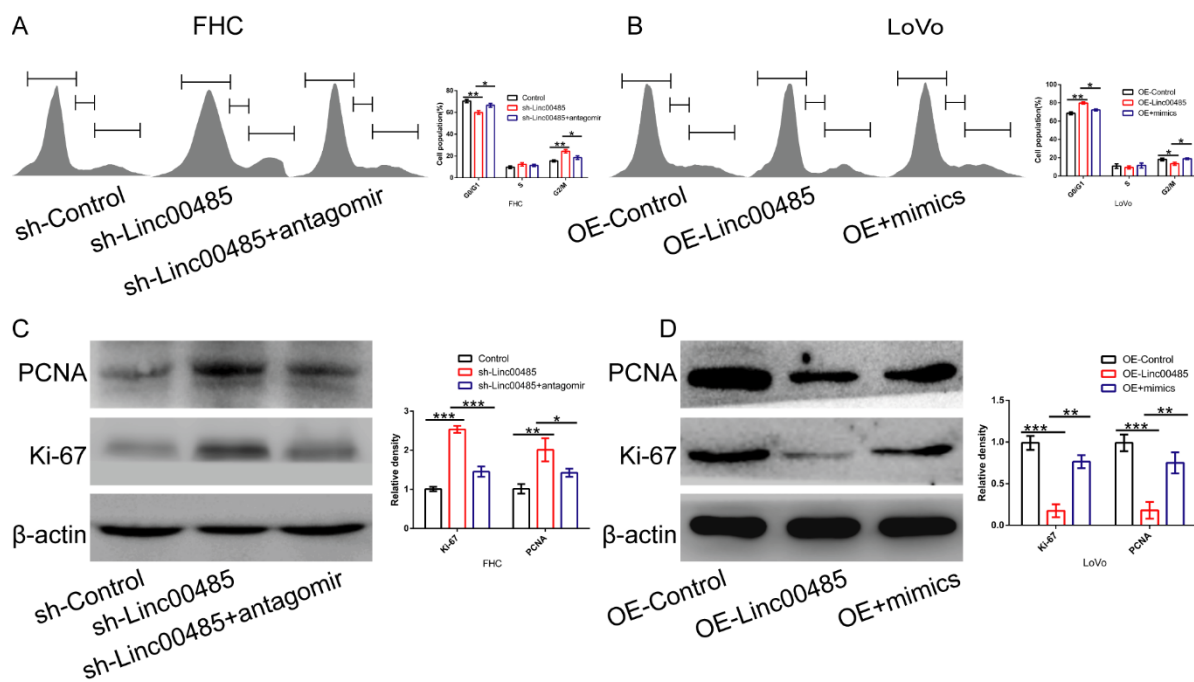
SUPPLEMENTARY FIGURES



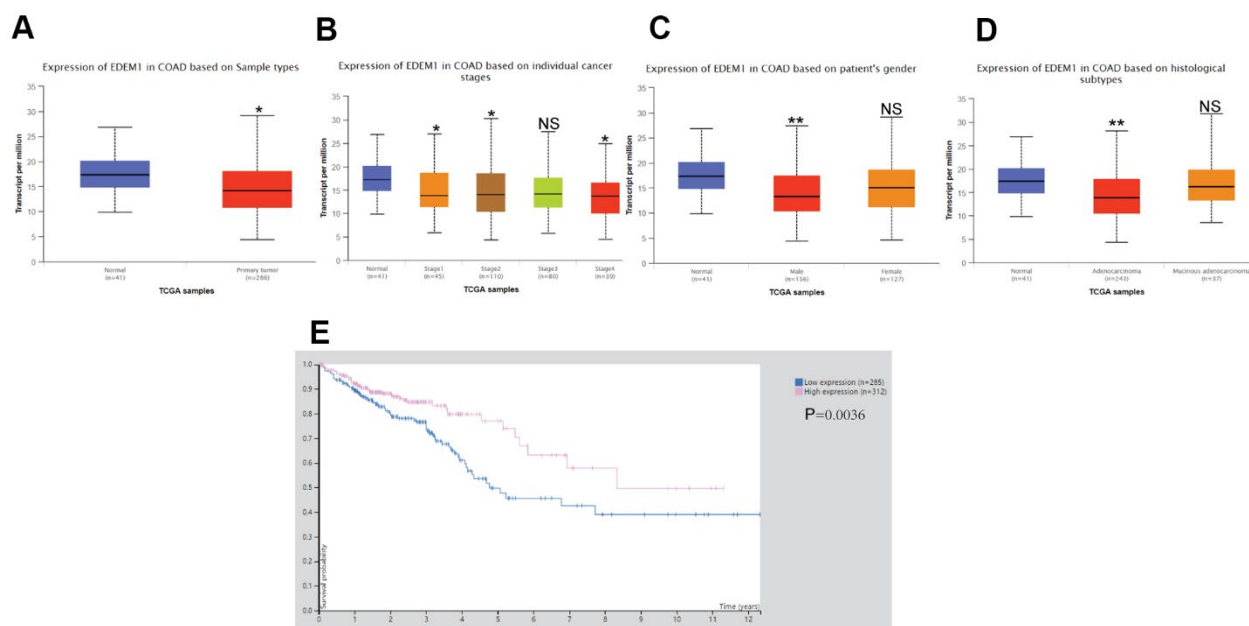
Supplementary Figure 1. The cellular localization of Linc00485 in FHC cell. FISH assay indicates that Linc00485 is mainly localized in the cytoplasm of FHC cells. Scale bar, 2 μ m.



Supplementary Figure 2. The effects of miR-581 mimics/antagomir transfection on FHC or LoVo cells. (A) After transfection with miR-581 mimics, the cell cycle was arrested in G0/G1 phase in FHC cells. (B) After transfection with miR-581 antagomir, the cell cycle was arrested in G0/G1 phase in LoVo cells. (C) The overexpression of miR-581 up-regulated the protein expression levels of Ki-67 and PCNA in FHC cells. (D) miR-581 knockdown down-regulated the protein expression levels of Ki-67 and PCNA in LoVo cells. Data were analyzed using Student's test. Bars were represented as S.D. $**P < 0.01$. PCNA, proliferating cell nuclear antigen.



Supplementary Figure 3. Linc01088/miR-581 axis regulates cell cycle and the expression of proliferative indexes PCNA and Ki-67. (A, B) Cell cycle of (A) LINC00485 silenced FHC cells with or without miR-581 antagomir treatment for 24 h and (B) LINC00485-overexpressed LoVo cells with or without miR-581 mimics treatment for 24 h was measured by the Flow Cytometry. (C, D) The protein expression levels of PNCA and Ki-67 in (C) LINC00485 silenced FHC cells with or without miR-581 antagomir treatment for 24 h and (D) LINC00485-overexpressed LoVo cells with or without miR-581 mimics treatment for 24 h were detected by Western blotting assays. Data was analyzed using the one-way ANOVA with LSD test. Bars were represented as S.D. * $P < 0.05$; ** $P < 0.01$; *** $P < 0.001$. PCNA, proliferating cell nuclear antigen; sh, short hairpin RNA targeting LINC00485; OE, overexpression.



Supplementary Figure 4. The relationship of EDEM1 expression with clinical parameters of COAD patients in TCGA and HAP databases. Expression of EDEM1 in patients with COAD based on (A) sample types, (B) individual cancer stages, (C) patient's gender and (D) histological subtypes. (E) Low expression of EDEM1 predicted a poor prognosis of CRC patients. COAD, colon adenocarcinoma. * $P < 0.05$; ** $P < 0.01$; NS, not significant.