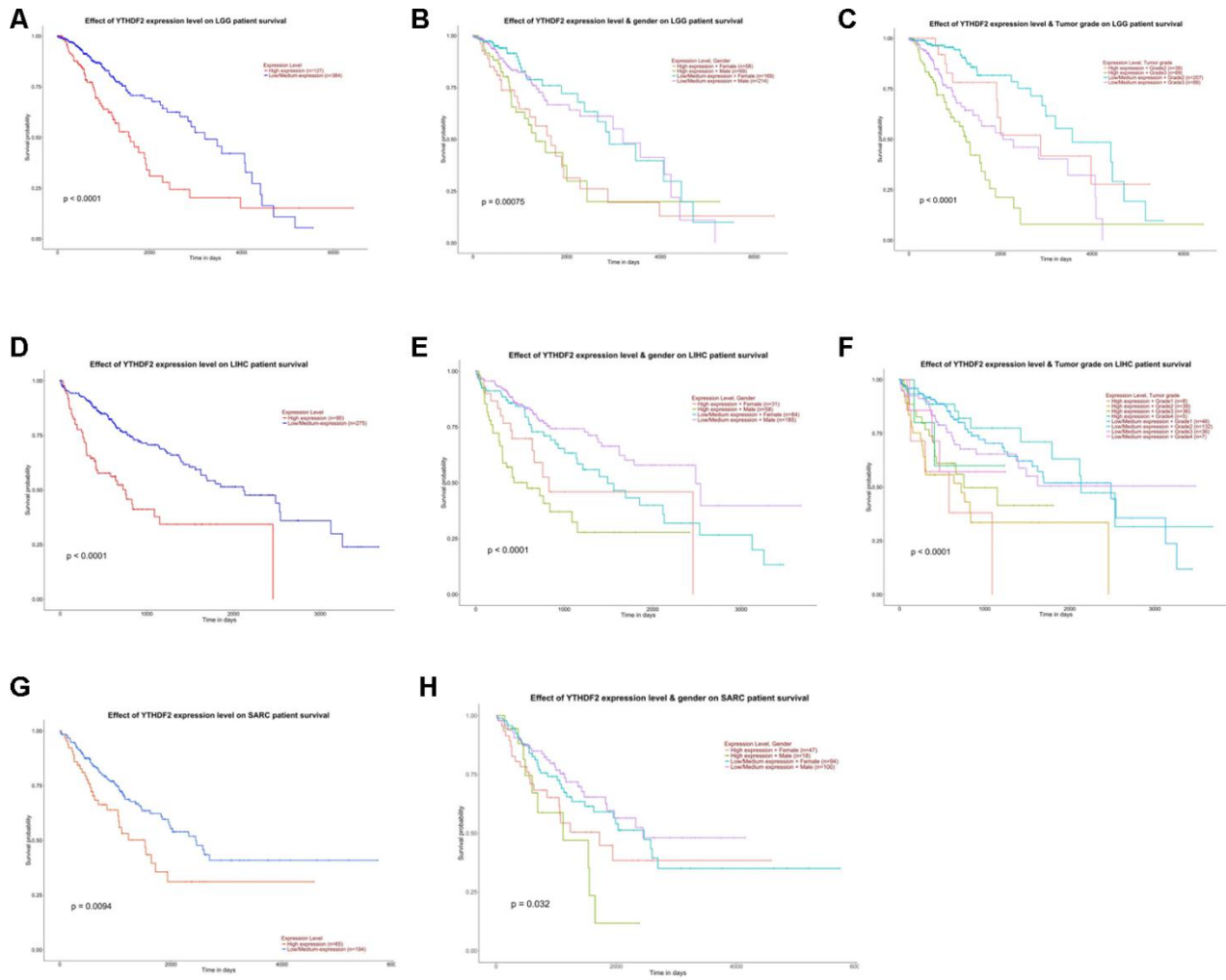
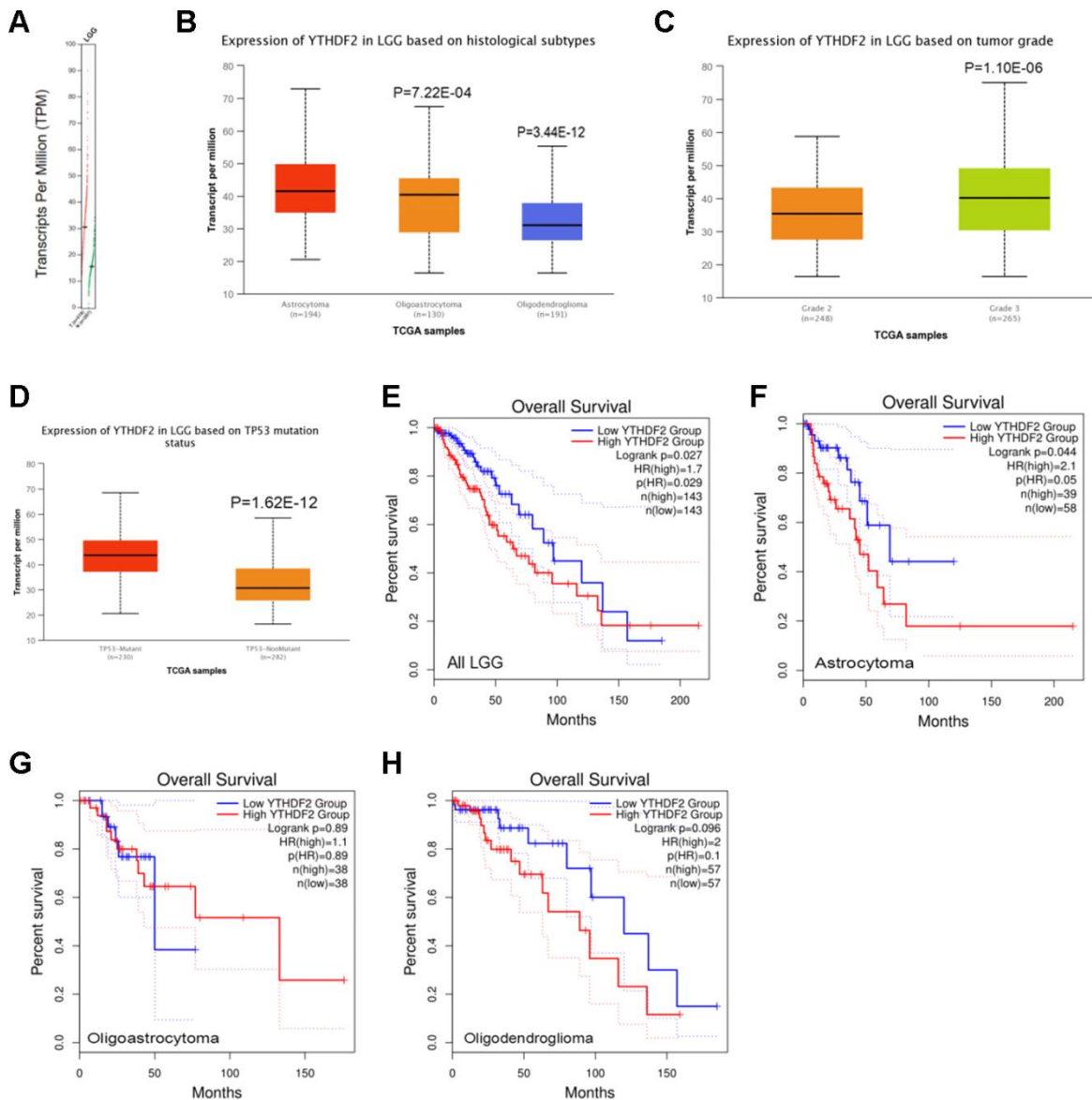


**SUPPLEMENTARY FIGURES**



**Supplementary Figure 1. Prognostic YTHDF2 values in cancers analyzed by the UALCAN database. (A) LGG. (B) LGG with different gender. (C) LGG with different tumor grade. (D) LIHC. (E) LIHC with different gender. (F) LIHC with different tumor grade. (G) SARC. (H) SARC with different gender. LGG, lower-grade glioma; LIHC, liver hepatocellular carcinoma; SARC, sarcoma.**



**Supplementary Figure 2. Expression and overall survival of YTHDF2 in LGG analyzed by the UALCAN and GEPIA databases. (A)** Expression level of YTHDF2 in LGG compared with normal sample. **(B)** Expression level of YTHDF2 in LGG based on histological subtypes. **(C)** Expression level of YTHDF2 in LGG based on tumor grade. **(D)** Expression level of YTHDF2 in LGG based on TP53 mutation status. **(E)** Overall survival of YTHDF2 in all LGG patients. **(F)** Overall survival of YTHDF2 in LGG patients with astrocytoma. **(G)** Overall survival of YTHDF2 in LGG patients with oligoastrocytoma. **(H)** Overall survival of YTHDF2 in LGG patients with oligodendroglioma. LGG, lower-grade glioma.