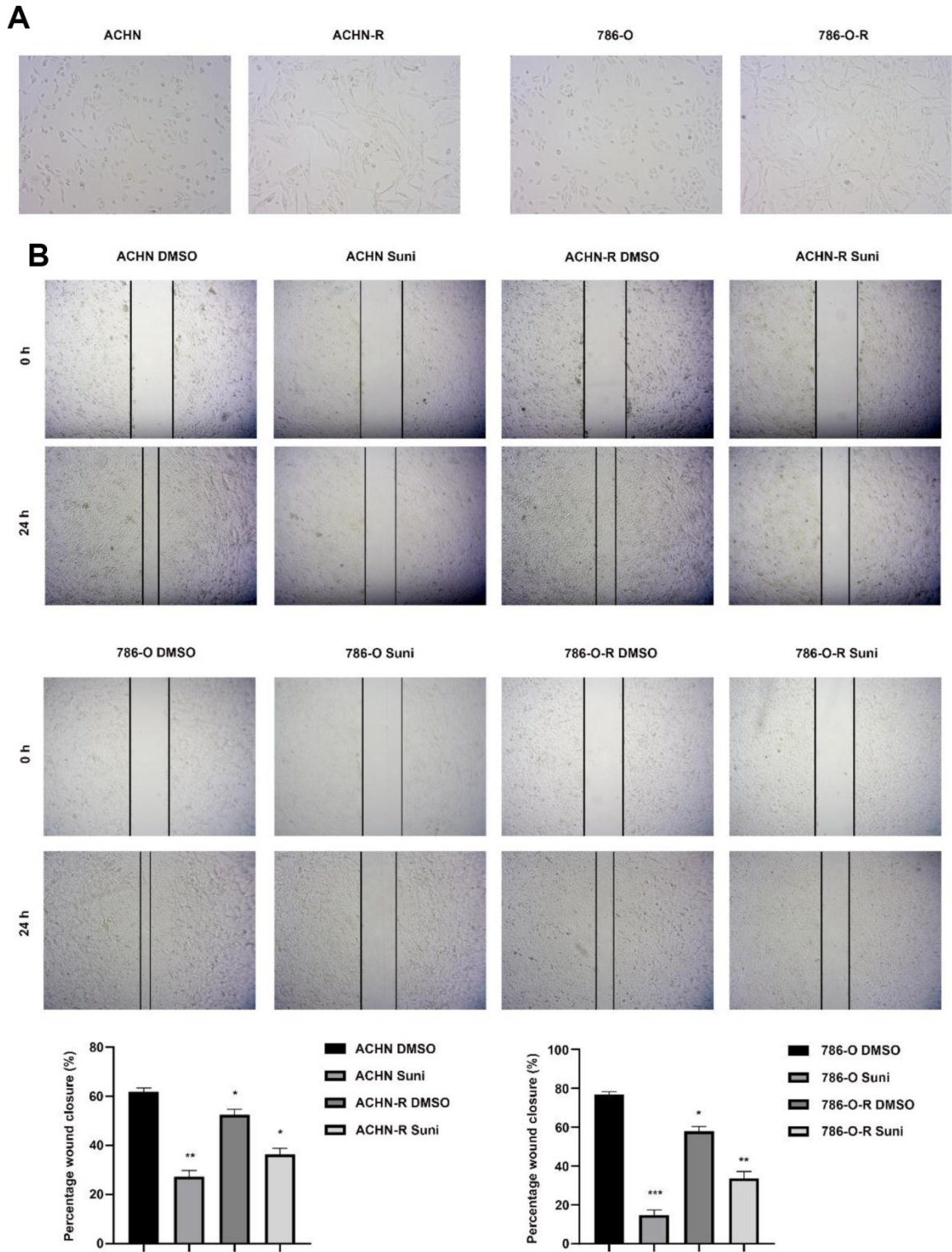
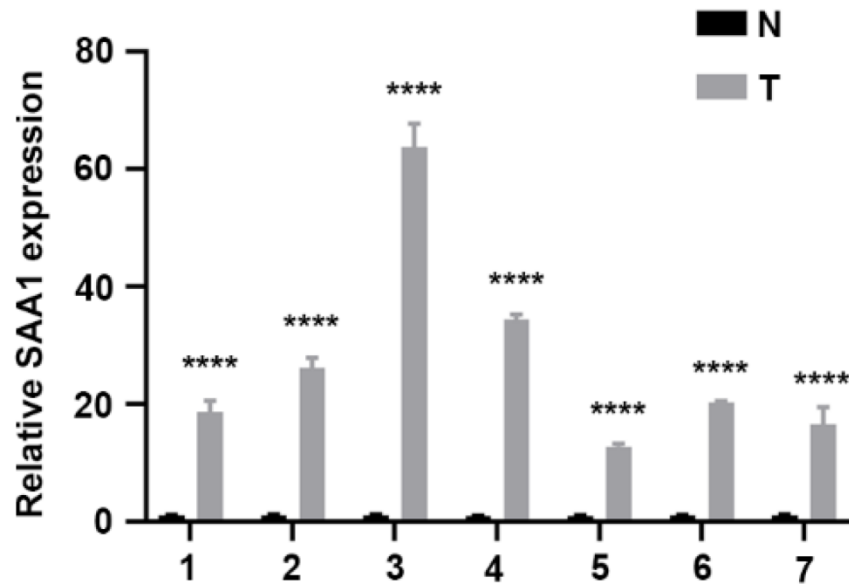


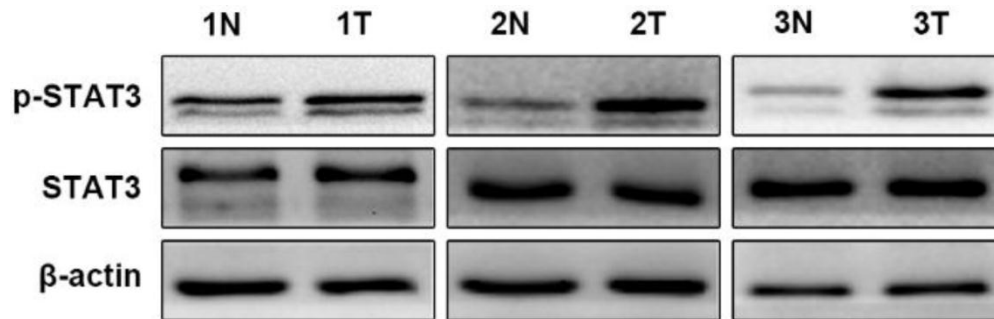
**SUPPLEMENTARY FIGURES**



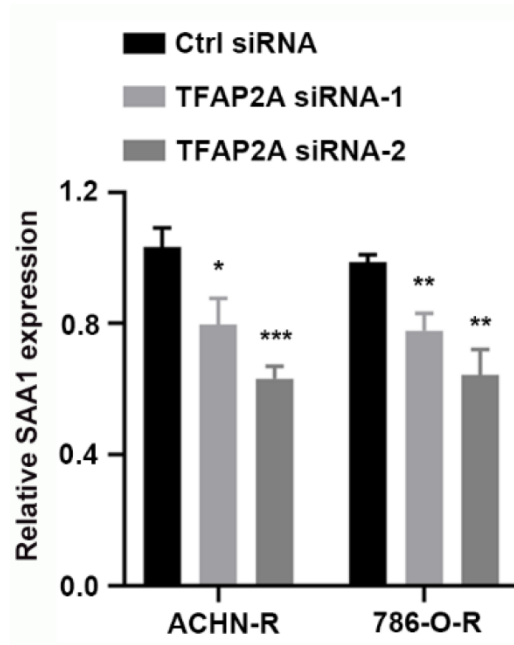
**Supplementary Figure 1. Comparison between parental and resistant cells.** (A) Cell morphology between parental cells ACHN, 786-O and resistant cells ACHN-R, 786-O-R. (B) Wound healing assays of resistant and parental cells with/without sunitinib treatment. Each experiment was performed at least three times and data was represented as mean ± SEM. \*P<0.05, \*\*P<0.01 and \*\*\*P<0.001.



**Supplementary Figure 2. SAA1 is overexpressed in clinical samples.** Each experiment was performed at least three times and data was represented as mean  $\pm$  SEM. \* $P < 0.05$ , \*\* $P < 0.01$ , \*\*\* $P < 0.001$  and \*\*\*\* $P < 0.0001$ .



**Supplementary Figure 3. JAK-STAT3 signaling pathway is activated in clinical samples.** Each experiment was performed at least three times.



**Supplementary Figure 4. Lower expression of SAA1 after TFAP2A knockdown.** Each experiment was performed at least three times and data was represented as mean  $\pm$  SEM. \* $P < 0.05$ , \*\* $P < 0.01$ , \*\*\* $P < 0.001$ .