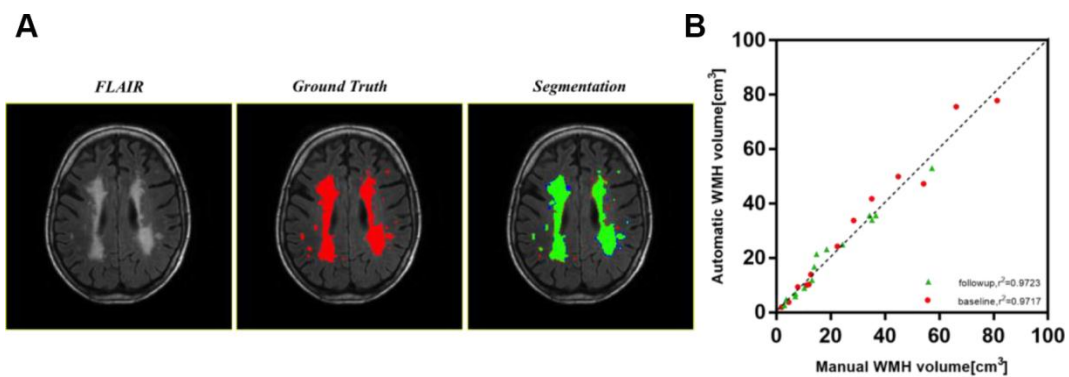


SUPPLEMENTARY FIGURE



Supplementary Figure 1. Validation of automatic segmentation. (A) Manual and automatic segmentation of one case: original T2w FLAIR image, manual segmentation of WMH (red), and automatic segmentation of WMH (green and blue). Green area represented the overlap between manual and automatic segmentation. (B) Pearson's correlation between manual and automatic segmentation of 27 cases. Red dots represented baseline WMH volume, and green triangles represented follow-up WMH volume. Dashed line represented a 1:1 relation. WMH = white matter hyperintensities.