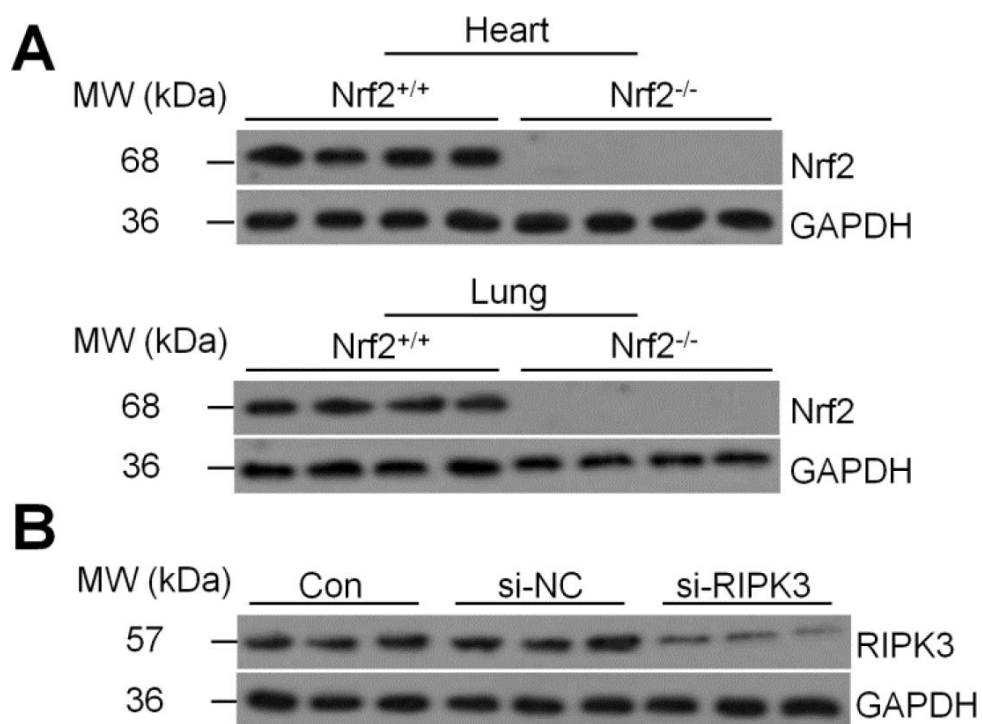


SUPPLEMENTARY FIGURE



**Supplementary Figure 1.** (A) Western blot analysis of Nrf2 in lung (up panel) and heart (down panel) tissues from the Nrf2<sup>+/+</sup> mice or Nrf2<sup>-/-</sup> mice (n=8/group). (B) Cardiomyocytes were transfected with siRIPK3 or its corresponding negative control siRNA for 24 h. Then, the cells were collected for western blot analysis of RIPK3 (n=6/group).