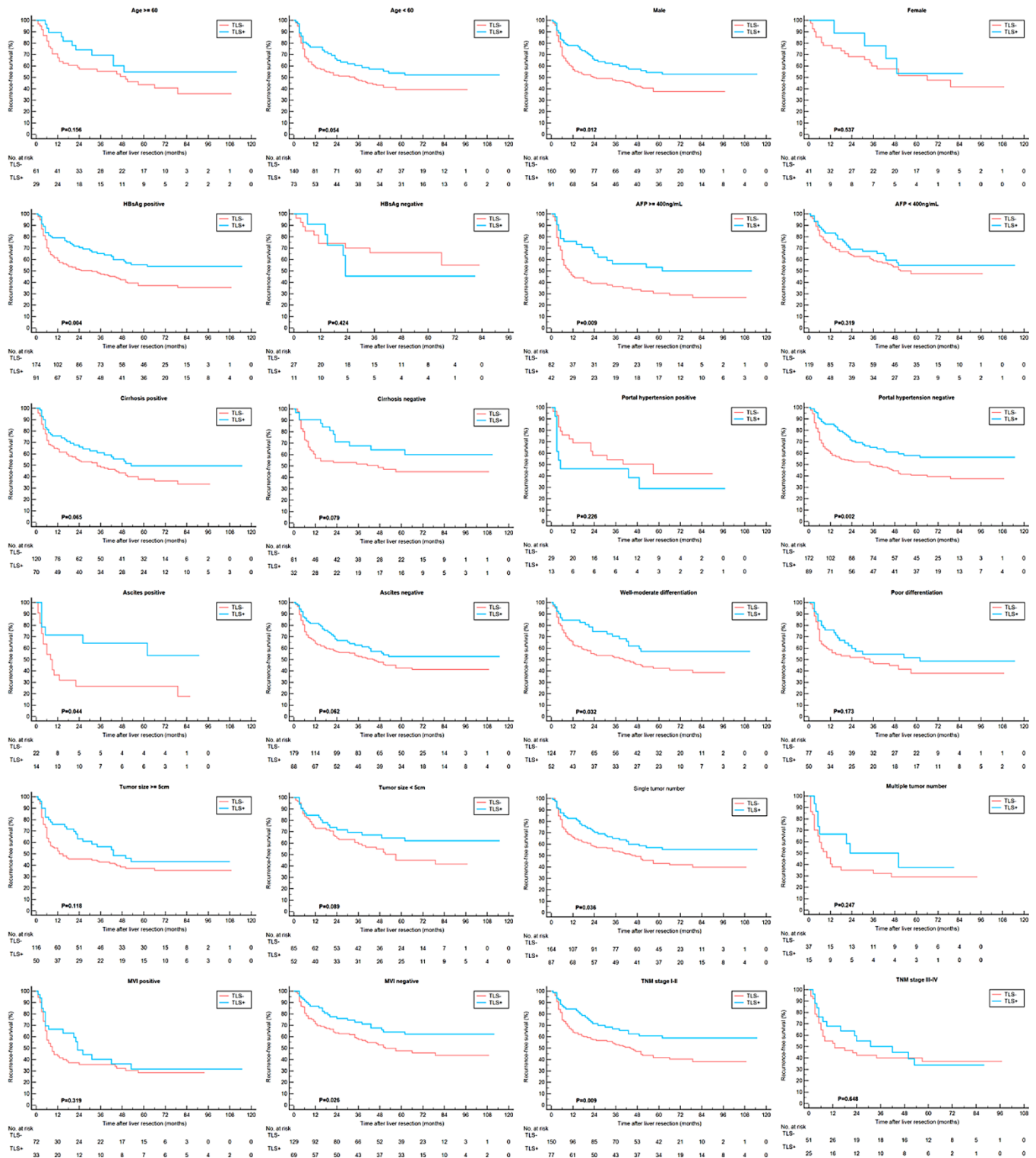
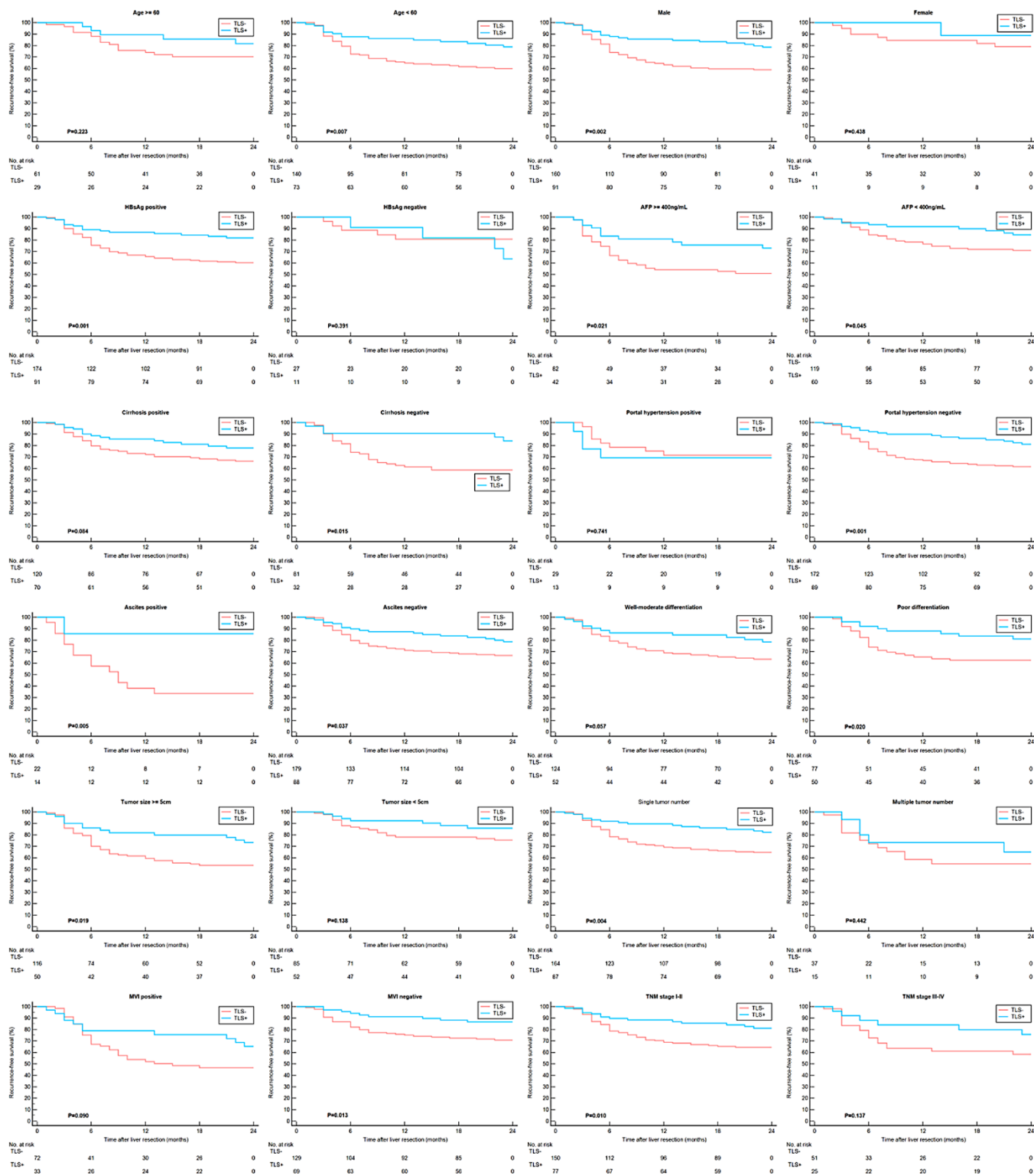


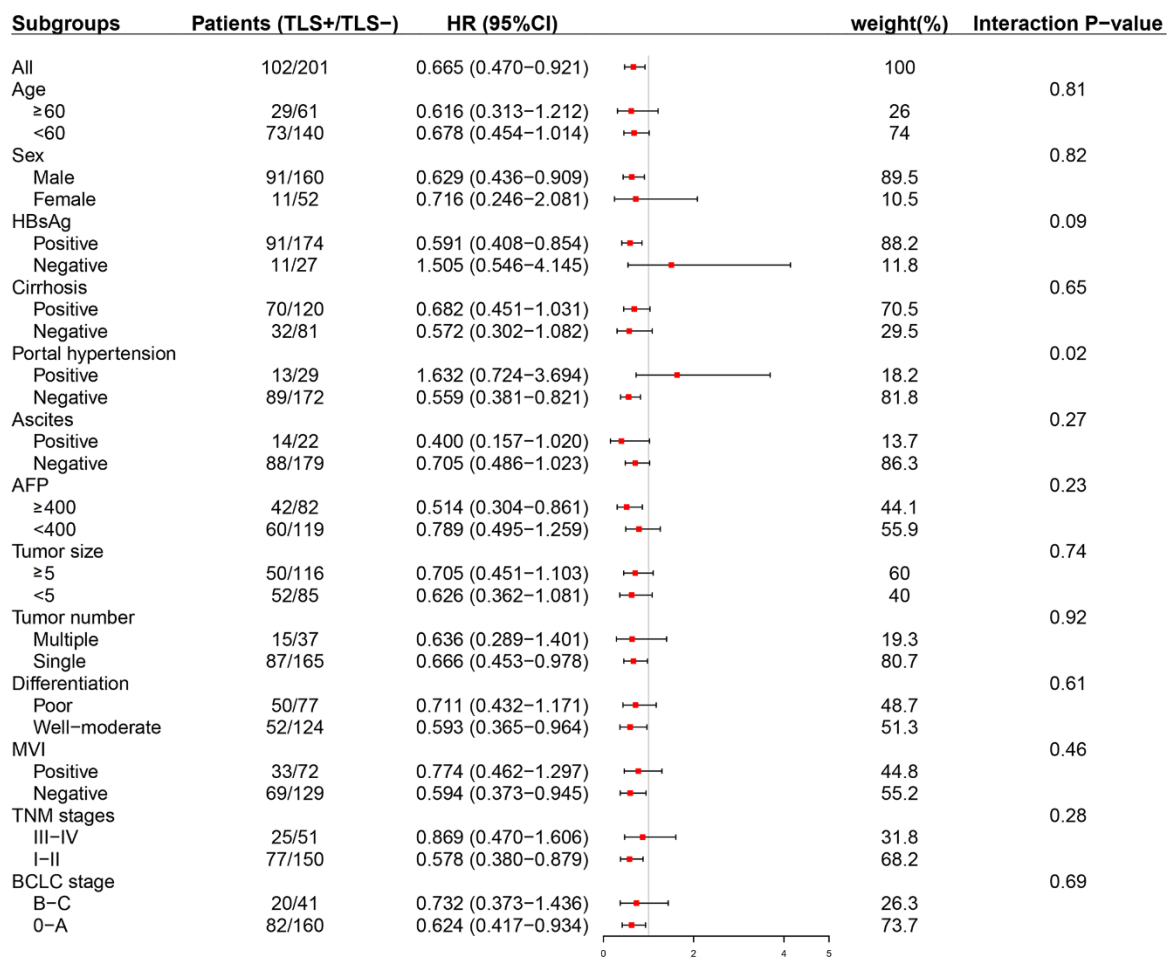
SUPPLEMENTARY FIGURES



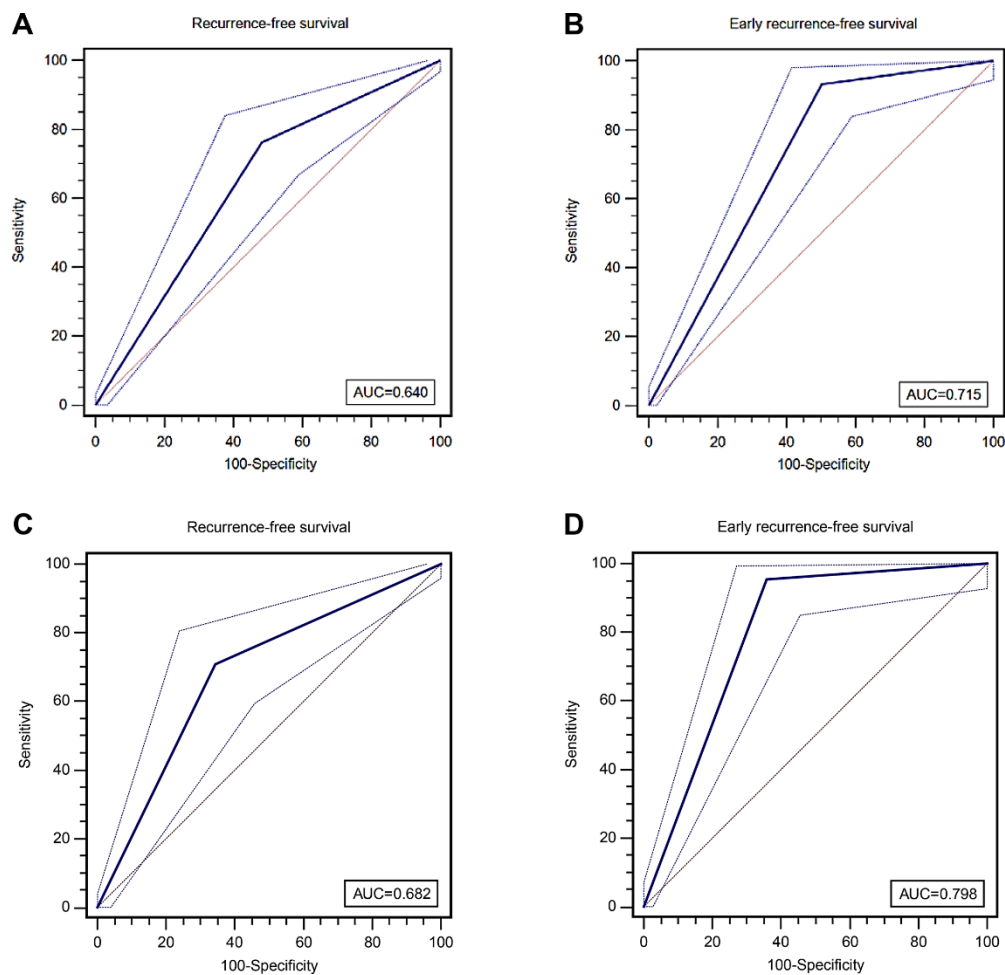
Supplementary Figure 1. Kaplan–Meier curves showing the association between the TLS and RFS stratified by subgroups in the training cohort. TLS, tertiary lymphoid structures; RFS, recurrence-free survival.



Supplementary Figure 2. Kaplan–Meier curves showing the association between TLS and early RFS stratified by subgroups in the training cohort. TLS, tertiary lymphoid structures; early RFS, early recurrence-free survival.



Supplementary Figure 3. Subgroup analysis based on clinicopathological features (recurrence-free survival). TLS, tertiary lymphoid structures; AFP, alpha-fetoprotein; BCLC, Barcelona Clinic of Liver Cancer; TNM, tumor-nodes-metastasis.



Supplementary Figure 4. ROC curves evaluating the accuracy of TLS in predicting tumor recurrence in training cohort. (A) The AUC was 0.64 for TLS in predicting RFS; **(B)** The AUC was 0.715 for TLS in predicting early tumor recurrence; **(C)** The AUC was 0.682 for TLS in predicting RFS for patients with BCLC 0-A stage HCC; **(D)** The AUC was 0.798 for TLS in predicting early tumor relapse for patients with BCLC 0-A stage HCC. ROC, receiver operating characteristic; TLS, tertiary lymphoid structures; AUC, area under the receiver operating characteristic; RFS, recurrence-free survival.