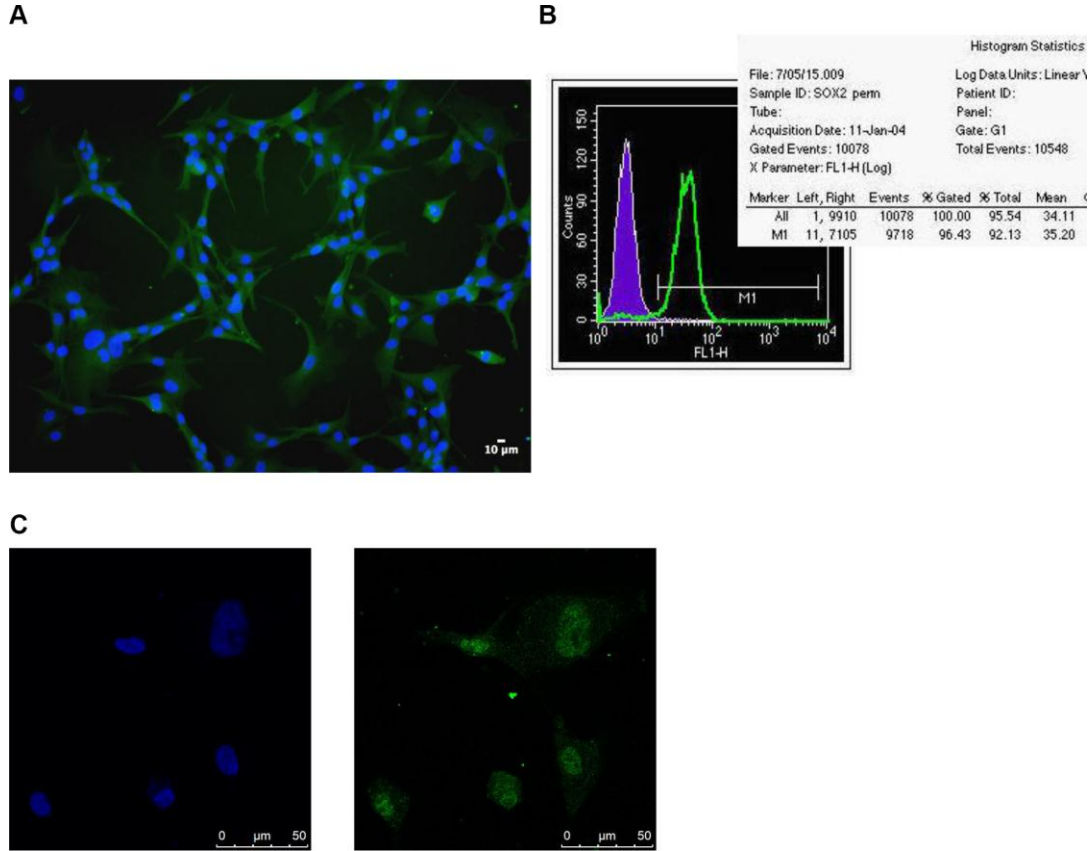
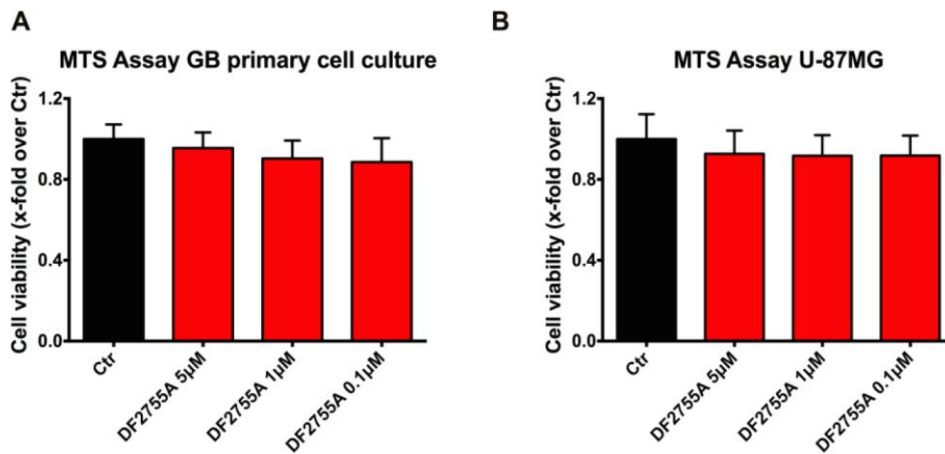


**SUPPLEMENTARY FIGURES**



**Supplementary Figure 1. Characterization analysis of the primary cell cultures, the data reported are representative of one primary cell culture derived from one patient specimen.** (A) GFAP (glial fibrillary acid protein) immunostaining (green), (B) flow cytometry assay to quantify SOX2-positive primary cell population. The positive cells represent the 92% of the whole cell population. (C) SOX2 immunostaining (green) and DAPI staining of nuclei (blue) of primary cell culture. Bar = 10µm and 50µm.



**Supplementary Figure 2. DF2755A effect on GB cellular models viability.** To evaluate DF2755A effect on cellular viability MTS assay was performed in GB primary cell culture (A) and U-87MG cell line (B). There is not significantly effect on cell viability as shown by the histograms. Data are means ± SEM of 3 different experiments performed in quadruplicate.