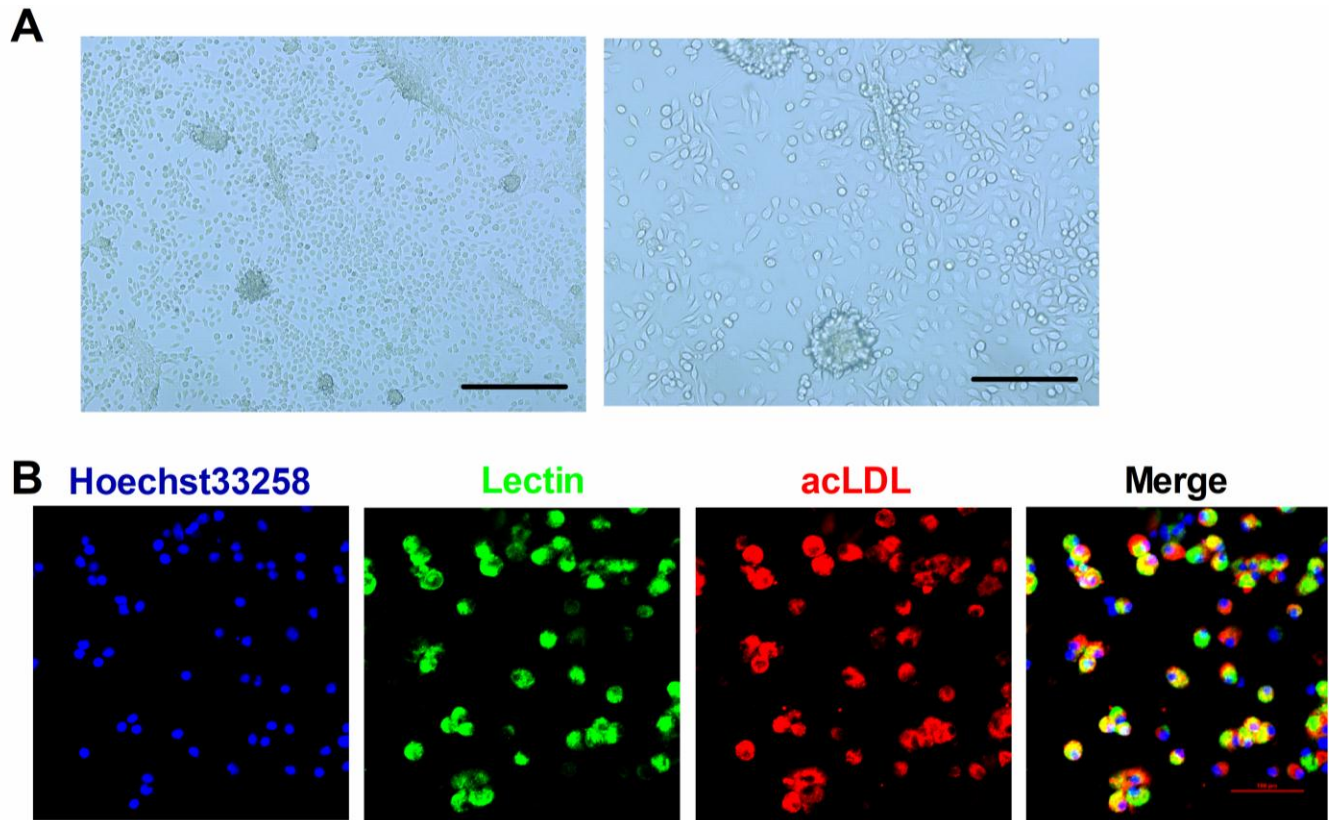


SUPPLEMENTARY FIGURE



Supplementary Figure 1. Characterization of early EPCs. (A) The isolated mononuclear cells became spindle-shaped following 7 days of culture. Scale bar: 500 (left) and 200 (right) μm . (B) The EPCs were identified as double positive for Dil-acLDL (red) and lectin (green) following 7 days of culture. Scale bar: 100 μm .