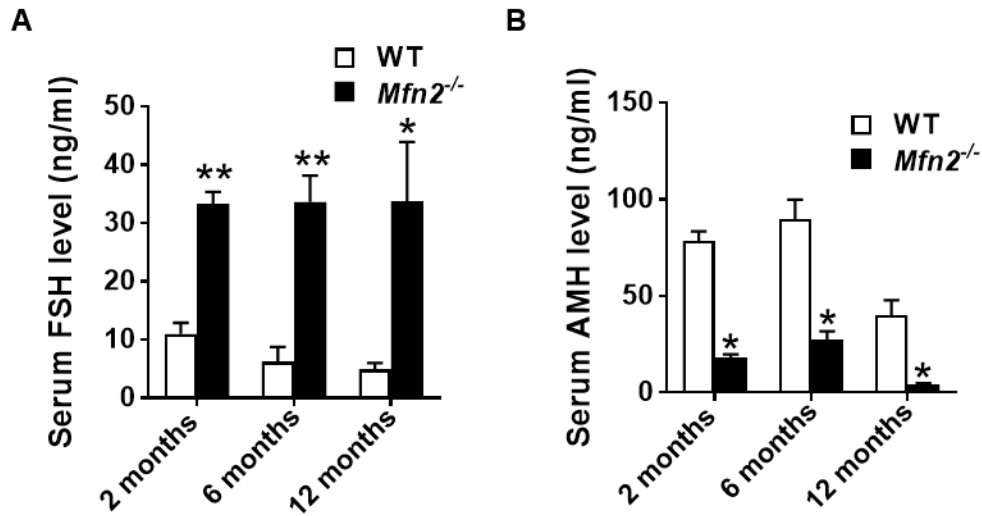
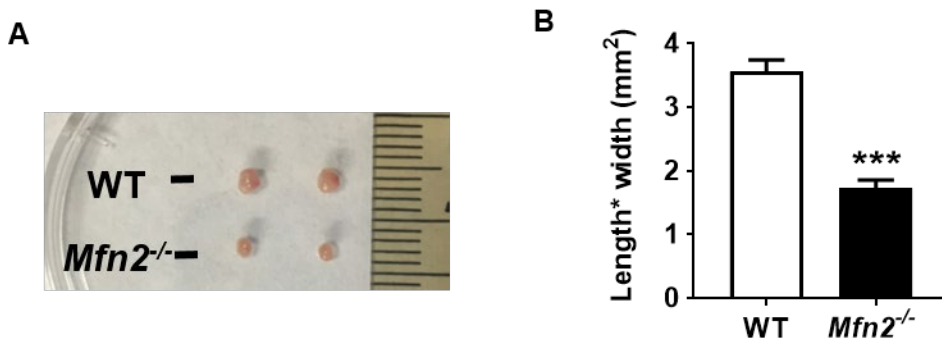


SUPPLEMENTARY MATERIAL

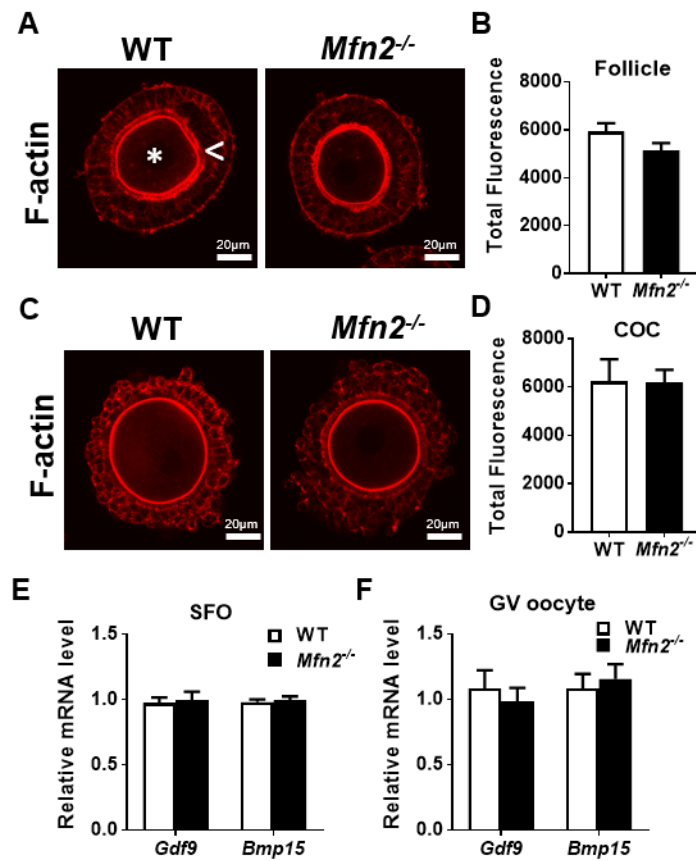
Supplementary Figures



Supplementary Figure 1. Serum AMH and FSH levels in female *Mfn2*^{-/-} mice. (A, B) Serum FSH and AMH levels in 2, 6- and 12 months old female WT and *Mfn2*^{-/-} mice. Data presented as mean ± SEM. **p* < 0.05, ***p* < 0.01 vs. WT from *t*-test.



Supplementary Figure 2. Ovarian size is decreased in *Mfn2*^{-/-} mice. (A) Representative photographs of ovaries from 8-week-old *Mfn2*^{-/-} and WT mice. (B) *Mfn2*^{-/-} mice had significantly smaller ovaries. Data presented as mean ± SEM. ****p* < 0.001 vs. WT from *t*-test.



Supplementary Figure 3. TZP formation is not changed in *Mfn2*^{-/-} secondary follicles of COCs. (A, C) Secondary follicles and COCs were isolated from the ovaries of *Mfn2*^{-/-} and WT mice, fixed, labeled with rhodamine-phalloidin, and examined by confocal microscopy. Asterisk designates oocyte; open arrow designates labeling of TZPs. (B, D) The total peak intensity for the zona pellucida and plasma membrane was calculated. (E, F) qRT-PCR analysis of *Gdf9* and *Bmp15* expression in *Mfn2*^{-/-} and WT SFOs and GV stage oocytes. Data presented as mean ± SEM.