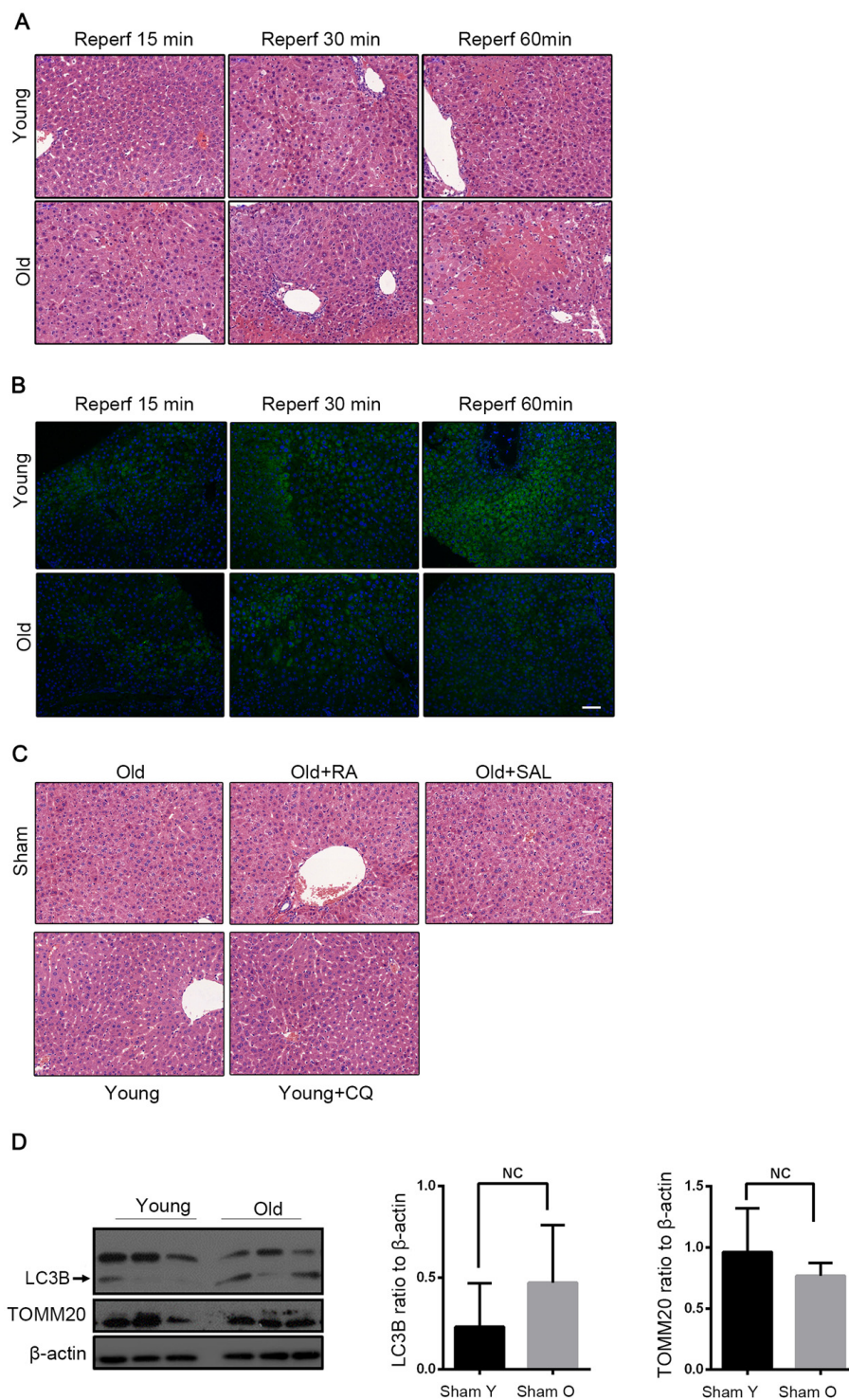


SUPPLEMENTARY FIGURE



Supplementary Figure 1. Mice of different age were treated as indicated. (A) Representative histology of liver by H&E staining at 15, 30 and 60 minutes after reperfusion. **(B)** Representative images of LC3B staining of liver tissues by fluorescence microscopy at 15, 30 and 60 minutes after reperfusion. **(C)** Representative histology of liver by H&E staining from indicated sham group (Y for young mice, Y+CQ for young mice with chloroquine pretreatment, O for old mice, O+RA for old mice with Rapamycin pretreatment, O+SAL for old mice with Salubrinal pretreatment). **(D)** The LC3B and TOMM20 protein levels were determined by western blot analysis from sham group. Scale bar: 50 μ m.