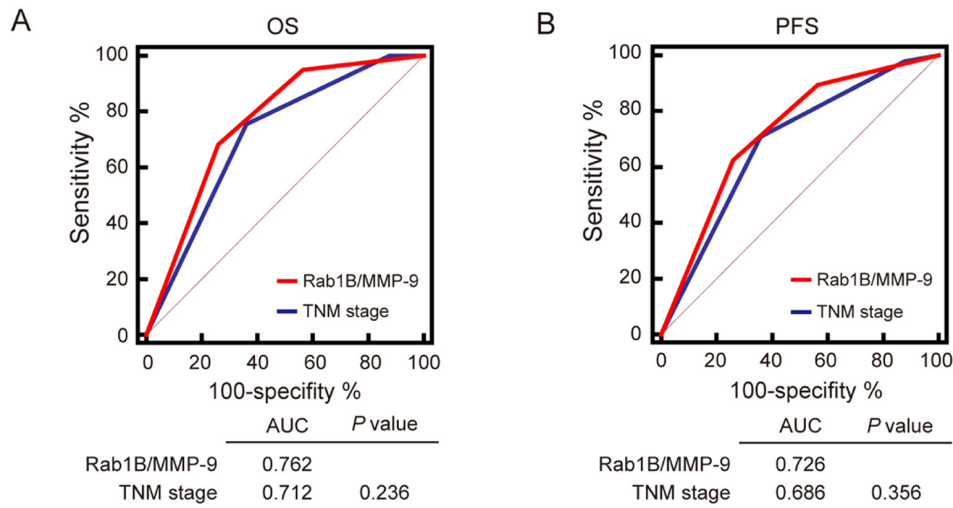


**SUPPLEMENTARY MATERIAL**

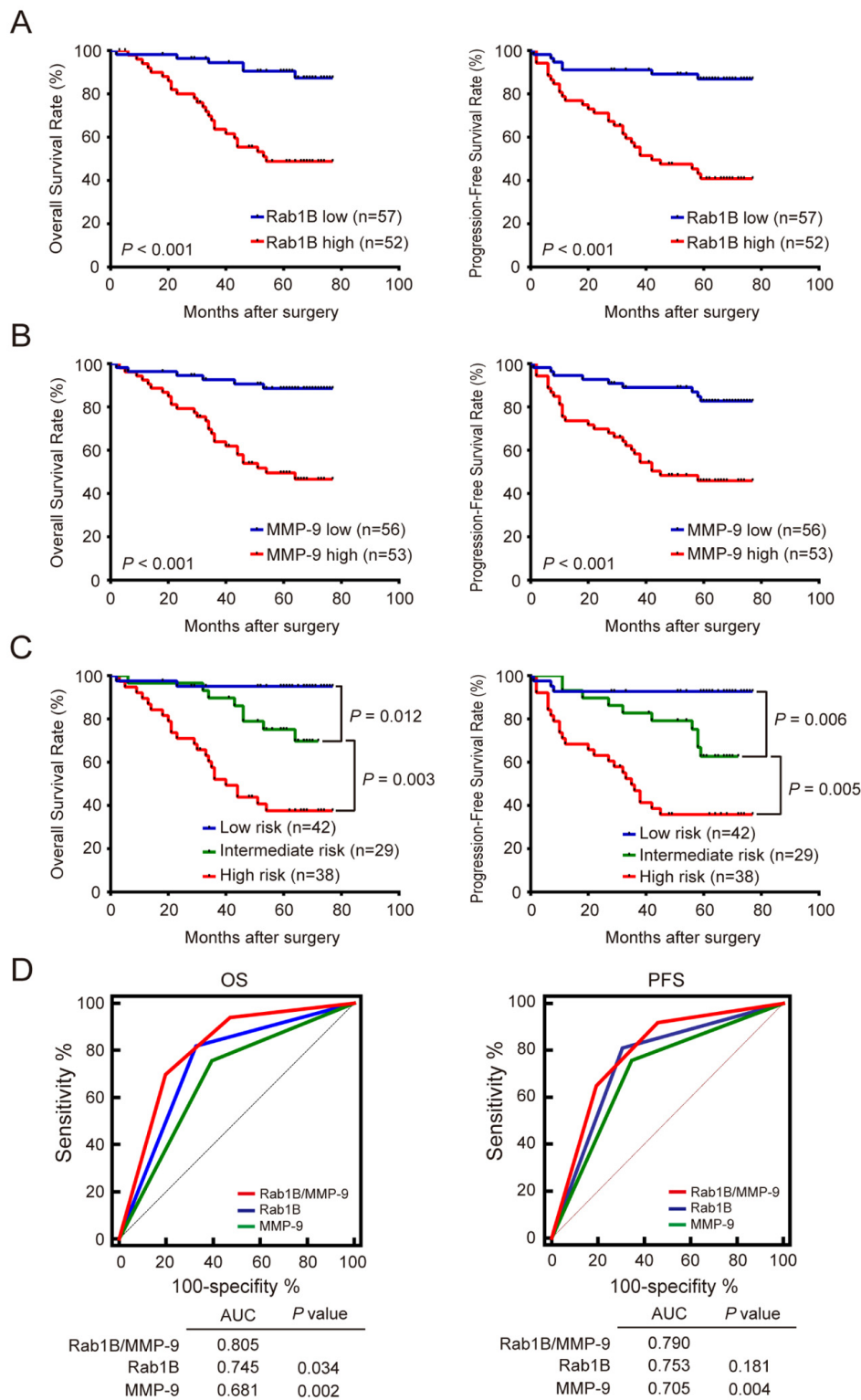


**Supplementary Figure 1. Rab1B/MMP9 combined expression has some better predictive accuracy for survival than TNM staging system in CRC patients.** Receiver operating characteristic (ROC) curve was used to compare the predictive accuracies for OS (A) and PFS (B) of CRC patients between combination of Rab1B/MMP9 expression and TNM staging system. AUC, the area under the curve.

**Table S1. Univariate and multivariate Cox regression analysis of Rab1B/MMP9 and survival in patients with CRC.**

Variables	Univariate analysis		P value	Multivariate analysis		P value
	HR	95% CI		HR	95% CI	
<b>Overall Survival</b>						
Tumor depth (Deep vs. Shallow)	6.477	0.889-47.176	0.065	1.839	0.236-14.320	0.561
TNM stage (III vs. II vs. I)	3.971	2.028-7.778	0.000*	2.217	1.074-4.578	0.031*
Adjuvant chemotherapy (Yes vs. No)	0.375	0.172-0.815	0.013*	0.369	0.166-0.818	0.014*
Rab1B/MMP9 risk factor (Low vs. Intermediate vs. High)	3.272	1.985-5.394	0.000*	2.711	1.605-4.577	0.000*
<b>Progression-Free Survival</b>						
Tumor depth (Deep vs. Shallow)	3.914	0.950-16.125	0.059	1.419	0.319-6.324	0.646
TNM stage (III vs. II vs. I)	3.083	1.762-5.394	0.000*	1.852	1.006-3.410	0.048*
Adjuvant chemotherapy (Yes vs. No)	0.428	0.218-0.839	0.013*	0.406	0.203-0.812	0.011*
Rab1B/MMP9 risk factor (Low vs. Intermediate vs. High)	2.604	1.726-3.928	0.000*	2.284	1.473-3.543	0.000*

Shallow: tumor invasion within mucosa and muscularis; Deep: tumor invasion or to beyond serosa; TNM, tumour node metastasis; CRC, colorectal cancer; HR, hazard ratio; CI, confidence interval. \*P< 0.05 was considered significant.



**Supplementary Figure 2. Either or combination of Rab1B and MMP9 protein expression predicts outcome of chemotherapy in CRC patients. (A)** Kaplan-Meier survival analysis shows OS and PFS of CRC patients with high- or low-expression of Rab1B in those without adjuvant chemotherapy. **(B)** OS and PFS of CRC patients with high- or low-expression of MMP9 in those without adjuvant chemotherapy. **(C)** OS and PFS of CRC patients with low-, intermediate- or high-risk score (calculated from the combination of Rab1B and MMP9) in those without adjuvant chemotherapy. **(D)** ROC curve was used to compare Rab1B, MMP9 and the combination of Rab1B/MMP9 in prediction of OS and PFS in CRC patients without adjuvant chemotherapy.