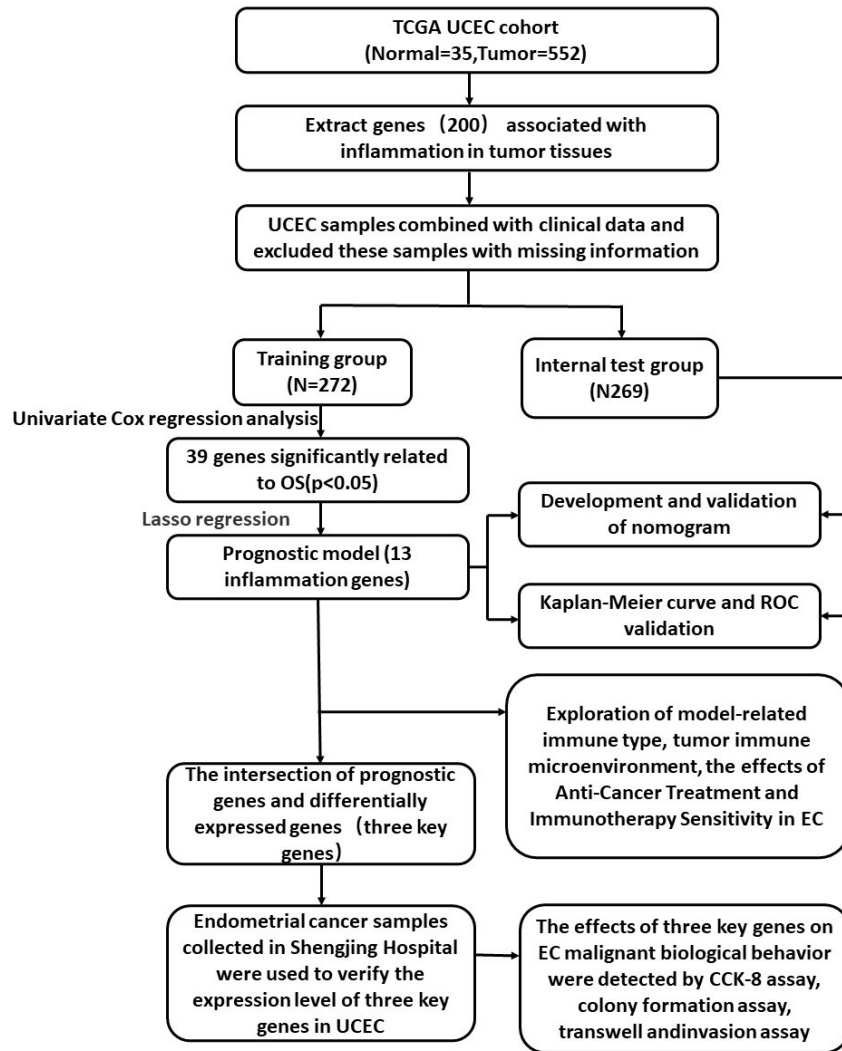
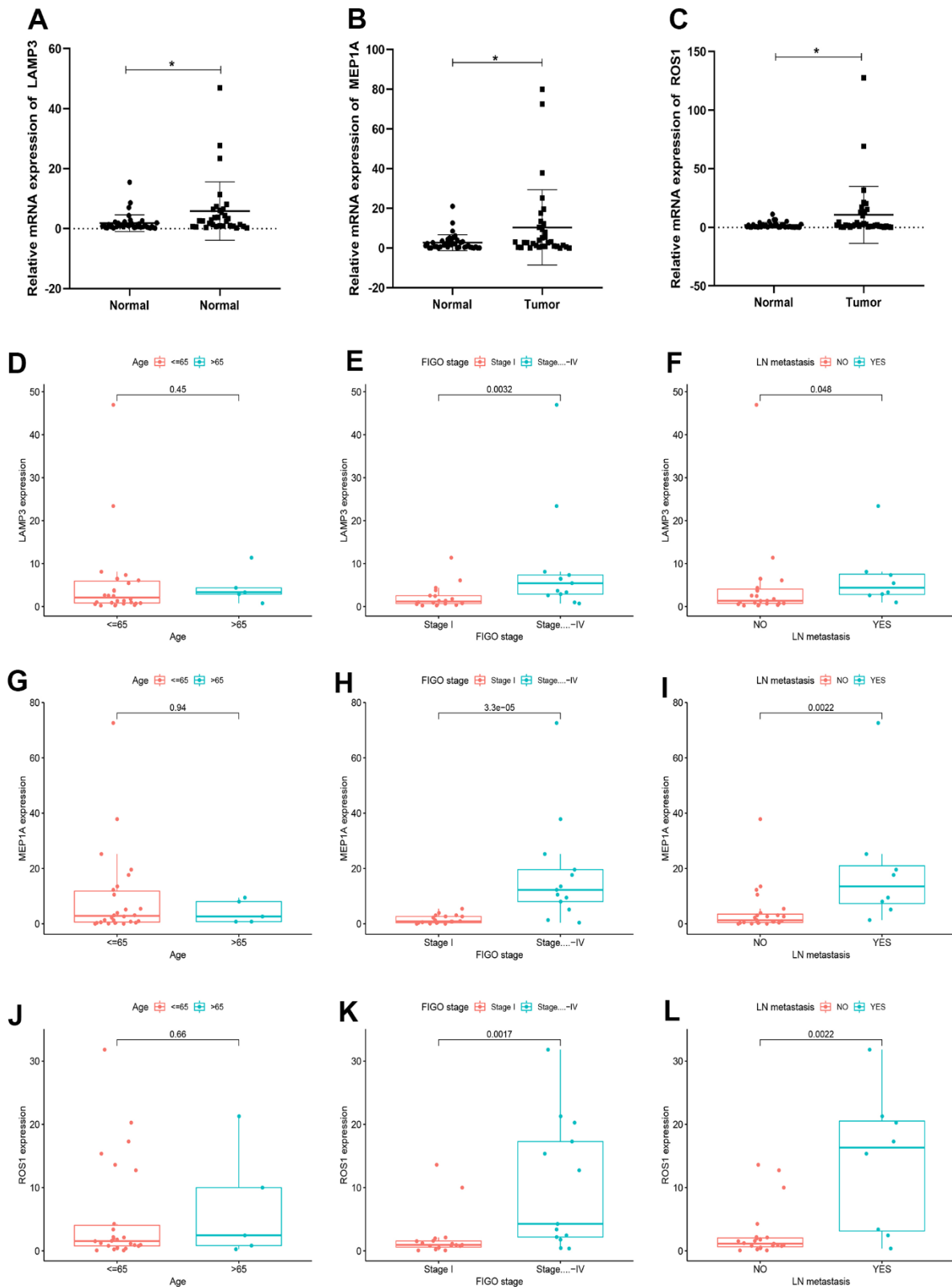


SUPPLEMENTARY FIGURES



Supplementary Figure 1. Comprehensive prognostic value analysis framework of inflammatory response-related genes (IRGs) in uterine corpus endometrial carcinoma (UCEC) patients based on TCGA database.



**Supplementary Figure 2. Relationships between three key IRGs expression in EC and clinicopathological parameters.** The results of qRT-PCR showed the expression of LAMP3 (A), MEP1A (B) and ROS1 (C) in normal endometrial tissue (n=43) and human endometrial carcinoma tissue (n=37). The expression of LAMP3 in different groups divided by age (D), stage (E) and LN-metastasis (F). The expression of MEP1A in different groups divided by age (G), stage (H) and LN-metastasis (I). The expression of ROS1 in different groups divided by age (J), stage (K) and LN-metastasis (L).