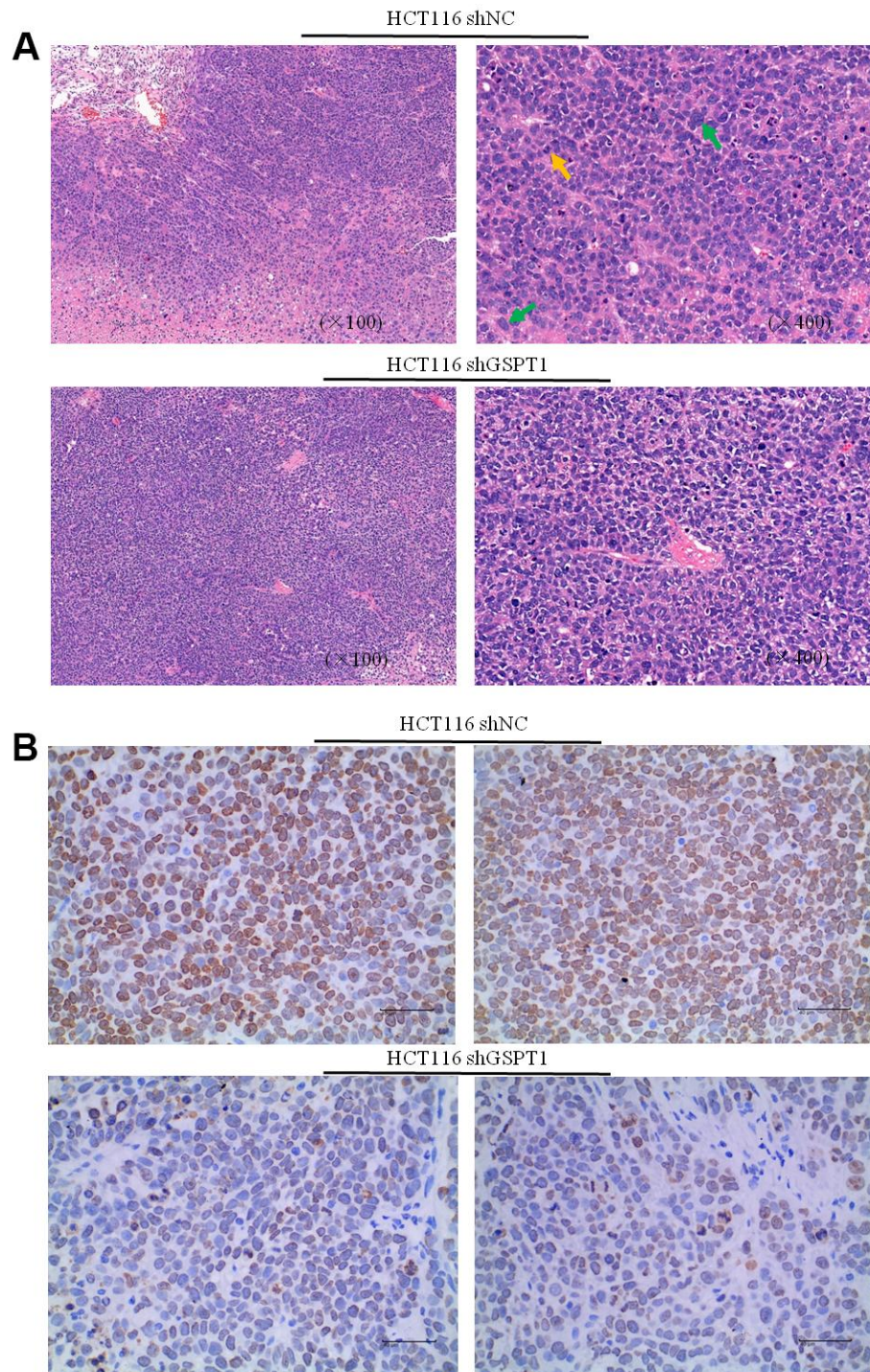


SUPPLEMENTARY FIGURE



Supplementary Figure 1. Silencing of GSPT1 inhibits HCT-116 cell growth in vivo. (A) HE staining of tumor samples from knockdown GSPT1 groups and control HCT116 groups. The nuclear atypia of tumor cells was large(↑), Mitotic phase(↑). **(B)** Ki67 immunostaining of tumor samples from knockdown GSPT1 groups and control HCT116 groups.