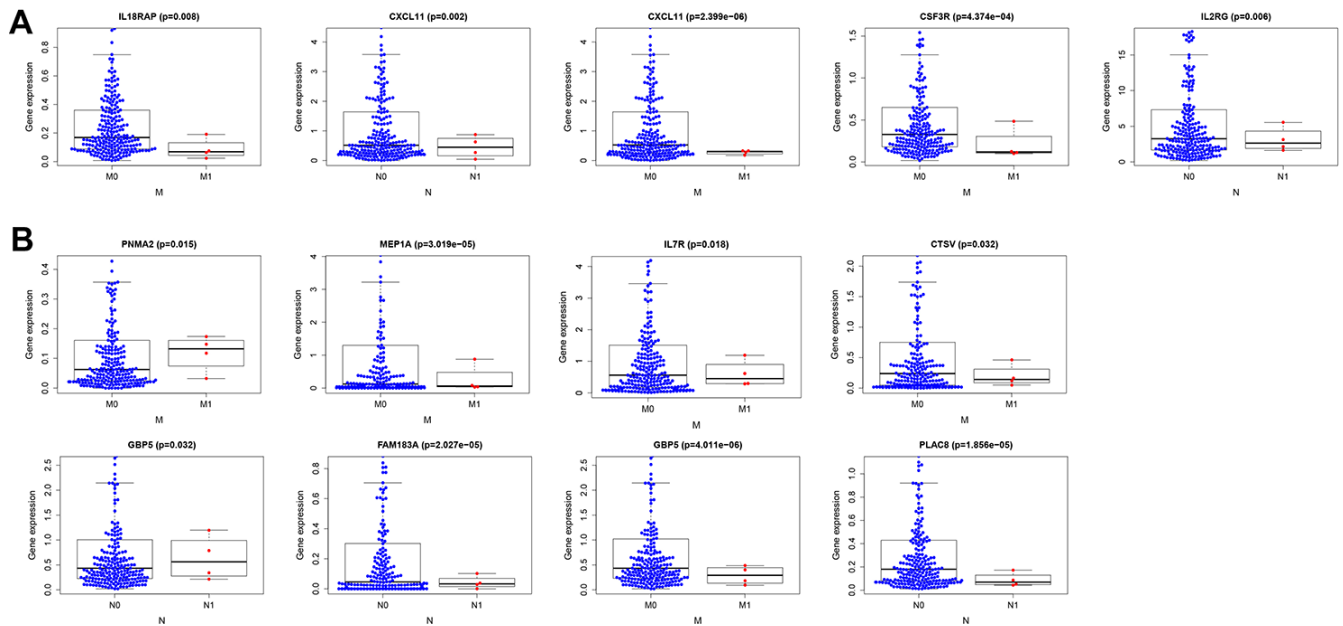


## SUPPLEMENTARY FIGURE



**Supplementary Figure 1. Clinical utility of the prognostic IRG panel and the stromal cell content-related prognostic DEG panel. (A, B) Relationships between genes in prognostic IRG panel (A) or stromal cell content-related prognostic DEG panel (B) and HCC clinicopathological features (lymph node metastasis status and distant metastasis status).**