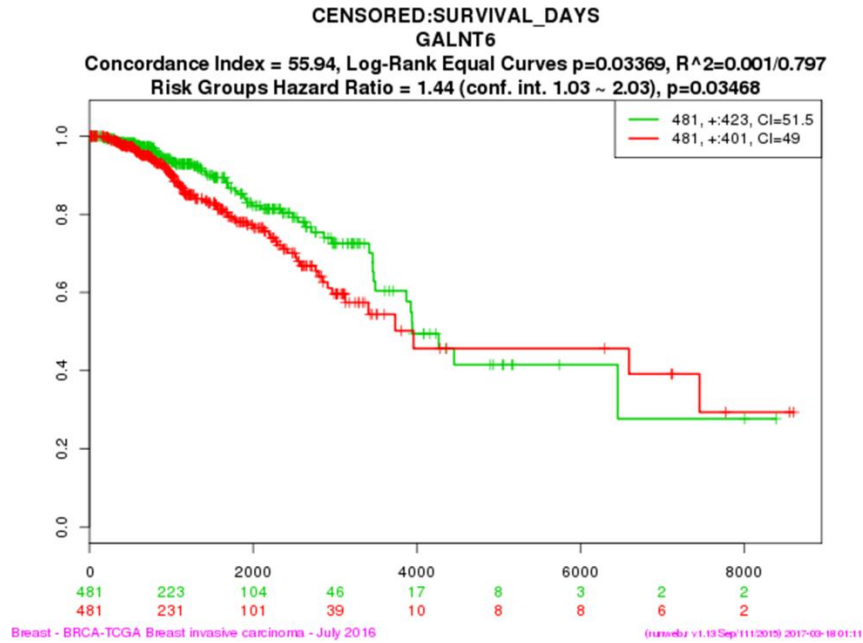
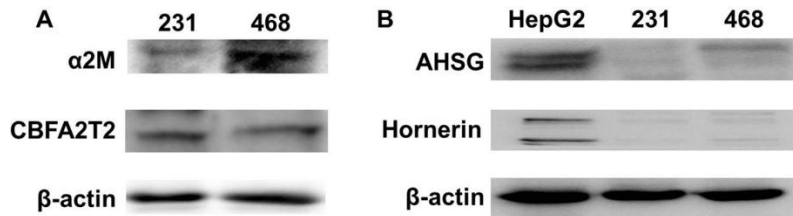


SUPPLEMENTARY FIGURES



Supplementary Figure 1. Kaplan-Meier curve for the OS of invasive breast cancer patients with different levels of GALNT6 based on TCGA in SurvExpress.



Supplementary Figure 2. Protein levels of AHSG, hornerin, α2M and CBFA2T2 in the secreted supernatants of MDA-MB-231 and MDA-MB-468 cells detected by Western blotting. (A) α2M and CBFA2T2; (B) AHSG and hornerin. HepG2 was used as positive control for AHSG and hornerin. β-actin was used as internal control.